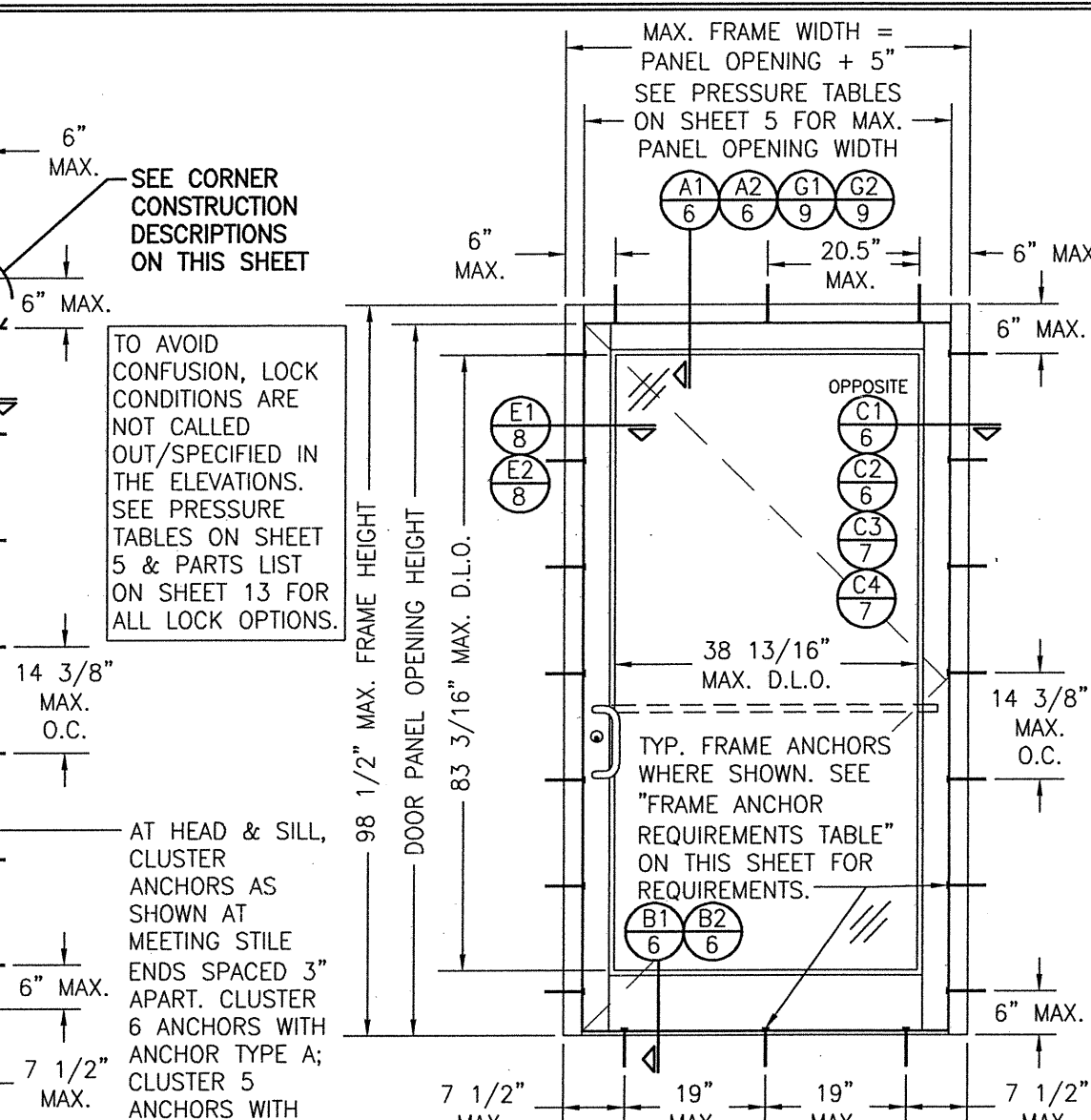


EXTERIOR ELEVATION; DOUBLE DOOR WITH IR500/501 STORE FRONT FRAMING & STANDARD INSTALLATION

SCALE: 1/2" = 1'-0"
(APPLICABLE WITH ALL HINGE TYPES)



EXTERIOR ELEVATION; SINGLE DOOR WITH IR500/501 STORE FRONT FRAMING & STANDARD INSTALLATION

SCALE: 1/2" = 1'-0"
(APPLICABLE WITH ALL HINGE TYPES)

CORNER & FRAME END CONSTRUCTION:

FRAME HEAD CORNER (IR500/501): HEAD IS SQUARE CUT, BUTTED TO SIDE, FASTENED WITH THREE (3) NO. 12 X 1" S.S. PHTFS FASTENERS THROUGH THE SIDE MEMBER INTO THE HEAD MEMBER SCREW SPLINES & SEALED WITH SILICONE.
FRAME HEAD CORNER (TRIFAB 450/451 FRAME): HEAD IS SQUARE CUT, BUTTED TO SIDE, SECURED WITH SHEAR BLOCK ITEM# 16 (SEE SECTIONS G/9 & M/10) & SEALED WITH SILICONE.
FRAME SILL CORNER: SILL IS SQUARE CUT, BUTTED TO SIDE, SECURED TO THE SIDE MEMBER USING A PIVOT ASSEMBLY OR STEEL CLIP, FASTENED WITH THREE (3) NO. 12-24 X 3/8" FHMS AT THE FRAME & TWO (2) NO. 12-24 X 3/8" FHMS AT THE SILL, & SEALED WITH SILICONE.
DOOR PANEL CORNERS: VERTICAL STILES RUN THROUGH AND ARE SECURED TO THE RAILS AT THE TOP & BOTTOM WITH 1/4" THICK EXTRUDED CHANNELS. EACH CHANNEL IS FASTENED TO THE STILE & RAIL WITH 1/4"-20 X 3/4" PHMS & 3/16" THICK STEEL NUT PLATES. THE INTERSECTION OF EACH CORNER JOINT WAS WELDED WITH A 1/2" DIA. PLUG WELD AND A 1 1/8" LONG FILLET WELD AT BOTH WEBS OF THE RAIL.
MIDRAIL ENDS: SECURED TO THE VERTICAL RAILS WITH 4 EACH 1 1/8" LONG FILLET WELDS

ALLOWABLE DESIGN PRESSURE
SEE SHEET 5

EVALUATION OF THIS PRODUCT IS BASED ON APPLICABLE STANDARDS AND/OR INFORMATION & RESULTS FROM APPLICABLE TEST REPORTS. THE FLORIDA BUILDING CODE VERSION CONSIDERED WITH THIS EVALUATION WAS THAT IN FORCE AT THE TIME OF THE EVALUATION. IN THE EVENT OF CODE VERSION CHANGES/UPDATES OR IN THE EVENT THAT NEW OR ADDITIONAL TESTING IS COMPLETED ON THIS PRODUCT, PRIOR TO STATING CODE COMPLIANCE WITH THE STATE, THE MANUFACTURER SHALL CONFIRM WITH THE EVALUATION ENGINEER OF RECORD THAT EVERYTHING SPECIFIED HERE-IN IS CURRENT WITH ALL CURRENT TESTING, CODES AND APPLICABLE STANDARDS.

WATER RATING NOTE: THESE DOOR UNITS ARE NOT APPROVED FOR USE WHERE WATER INFILTRATION RESISTANCE IS REQUIRED BY THE DOOR UNLESS ONE OF THE FOLLOWING APPLIES:

1. UNITS ARE INSTALLED IN NON-HABITABLE AREAS WHERE THE UNIT & THE AREA ARE DESIGNED TO ACCEPT WATER INFILTRATION.
2. UNITS ARE INSTALLED AT A LOCATION PROTECTED BY A CANOPY OR OVERHANG WHERE-BY THE OVERHANG(OH) RATIO IS EQUAL TO OR MORE THAN 1.0 PER FBC.
3. IF THE DOOR IS INSTALLED IN AN IR-501 SYSTEM THAT HAS THE HEAD JAMB WEATHER SEAL SHOWN IN SECTIONS A1 OR K, HAS A SILL & SILL DAM ASSEMBLY AS SHOWN IN SECTION B2, IF A DOUBLE DOOR, HAS MEETING STILE COVERS AS SHOWN IN SECTION D1, USES THE 2 POINT LOCK PART NUMBER 40 OR 42 AT INACTIVE PANELS, USES THE 3-POINT LOCK UNDER PART NUMBER 39 OR 41 AT ACTIVE PANELS AND USES THE GEAR OR BUTT HINGES UNDER PART NUMBER 36 OR 37.

- GENERAL NOTES:**
1. THIS PRODUCT HAS BEEN TESTED, ANALYZED & APPROVED FOR DESIGN PRESSURES NOT TO EXCEED THOSE SHOWN IN THE "ALLOWABLE DESIGN PRESSURE TABLE(S)".
 2. OPENINGS, BUCKING & BUCKING FASTENERS MUST BE PROPERLY DESIGNED & INSTALLED TO TRANSFER WIND LOADS TO THE STRUCTURE.
 3. ALL HARDWARE & FASTENERS SHALL BE IN ACCORDANCE WITH THESE DRAWINGS & SHALL NOT VARY UNLESS SPECIFICALLY MENTIONED ON THE DRAWINGS. SPECIFIED ANCHOR EMBED TO BASE MATERIAL SHALL BE BEYOND WALL FINISH OR STUCCO.
 4. THIS PRODUCT HAS BEEN DESIGNED IN ACCORDANCE WITH AND MEETS THE REQUIREMENTS OF THE FLORIDA BUILDING CODE (FBC) INCLUDING HIGH VELOCITY HURRICANE ZONES (HVHZ) & IS LARGE MISSILE IMPACT RATED.
 5. IMPACT SHUTTERS ARE NOT REQUIRED WITH THIS PRODUCT.
 6. ALL ANCHORS SECURING PRODUCT FRAMES TO PRESSURE TREATED BUCKS OR WOOD FRAMING SHALL BE CAPABLE OF RESISTING CORROSION CAUSED BY THE PRESSURE TREATING CHEMICALS IN THE WOOD.
 7. DETERMINE THE POSITIVE & NEGATIVE DESIGN LOADS TO USE WHEN REFERENCING THESE DOCUMENTS IN ACCORDANCE WITH THE GOVERNING CODE AND GOVERNING WIND VELOCITY. FOR WIND LOAD CALCULATIONS IN ACCORDANCE WITH THE FLORIDA BUILDING CODE, A DIRECTIONALITY FACTOR OF Kd = 0.85 MAY BE APPLIED PER THE ASCE-7 STANDARD.
 8. MATERIALS, INCLUDING BUT NOT LIMITED TO STEEL SCREWS, THAT COME INTO CONTACT WITH OTHER DISSIMILAR MATERIALS SHALL MEET THE REQUIREMENTS OF FLORIDA BUILDING CODE.
 9. TO THE BEST OF OUR KNOWLEDGE, THE PRODUCT SHOWN HEREIN IS QUALITY ASSURED BY A FLORIDA STATE APPROVED CERTIFICATION/QA ENTITY & SHALL BE LABELED IN ACCORDANCE WITH THE FBC AND THE FLORIDA DEPARTMENT OF BUSINESS & PROFESSIONAL REGULATION SPECIFICATIONS. THESE DRAWINGS SHOW ALL APPLICABLE ELEVATION, COMBINATION, INSTALLATION & COMPARATIVE ANALYSIS CONDITIONS AS DETERMINED THROUGH TESTING & ENGINEERING RATIONAL ANALYSIS. PRODUCT ASSEMBLY SHALL BE IN ACCORDANCE WITH THESE DRAWINGS, THE MANUFACTURER'S QUALITY ASSURANCE SPECIFICATIONS & TESTING REPORTS.
 10. CERTIFICATION OF THIS PRODUCT SHALL BE CONSIDERED VOID IF IT IS INSTALLED WITHOUT A BUILDING PERMIT FROM THE APPLICABLE LOCAL BUILDING DEPARTMENT OR IF IT IS INSTALLED BY ANYONE OTHER THAN A LICENSED CONTRACTOR EXPERIENCED WITH INSTALLATIONS OF THIS TYPE OF PRODUCT.

FRAME ANCHOR REQUIREMENTS TABLE				
FRAME & SILL ANCHORS				
ANCHOR TYPE	OPENING TYPE (SUBSTRATE)	JAMB TO OPENING FASTENER TYPE	MINIMUM EMBED	MINIMUM EDGE DIST.
A	2X_ WOOD FRAME OR BUCK (MIN. GR. 3 & G=0.55)	NO. 14 SMS SCREW	1 1/4"	3/4"
B	MIN. 18 GA. 33 KSI METAL STUD	(2) NO. 12 SELF DRILL/TAPPING SCREW	FULL	1/2"
C	MIN. 0.22" THICK A36 STEEL	(2) 1/4"-20 SELF DRILL/TAPPING SCREW	FULL	1/2"
D	MIN. 3000 P.S.I. CONCRETE	(1) 1/4" CONCRETE SCREW	1 3/4"	2 1/2"
E	MIN. C90 CONCRETE FILLED BLOCK	(1) 1/4" CONCRETE SCREW	1 1/2"	2 1/2"
F	CURTAIN WALL	(2) 1/4"-20 SELF DRILL/TAPPING SCREW	FULL	1/2"

(1) CONCRETE SCREWS SHALL BE ELCO ULTRACONS (C.S.), ELCO CRETE-FLEX (S.S.) OR HILTI KWIK-CON II (C.S OR S.S.).
 (2) SELF DRILLING & SELF TAPPING SCREWS SHALL BE MIN. GRADE 5 CORROSION RESISTANT STEEL

THESE DRAWINGS ARE APPLICABLE ONLY TO THE PRODUCT SPECIFIED. THEY MAY NOT BE USED FOR THE ASSEMBLY AND/OR INSTALLATION OF ANY OTHER PRODUCT NOR MAY THEY BE USED FOR RATIONAL AND/OR LOCAL APPROVAL OF ANY PRODUCT NOT PRODUCED BY THE MANUFACTURER STATED ON THESE DRAWINGS.

DRAWN BY: W.R.M.	CHECKED BY: W.W.S.		
PLOT: 1-24	DATE: 02/11/11		
DATE	BY	REVISION DESCRIPTION	NO.
02/17/14	WRM	UPDATE PER NEW TESTING	A1
06/28/15	WWS	CHANGE TO STATE ONLY APPROVAL	B1
08/04/21	WWS	UPDATE FOR WATER RATING	C1

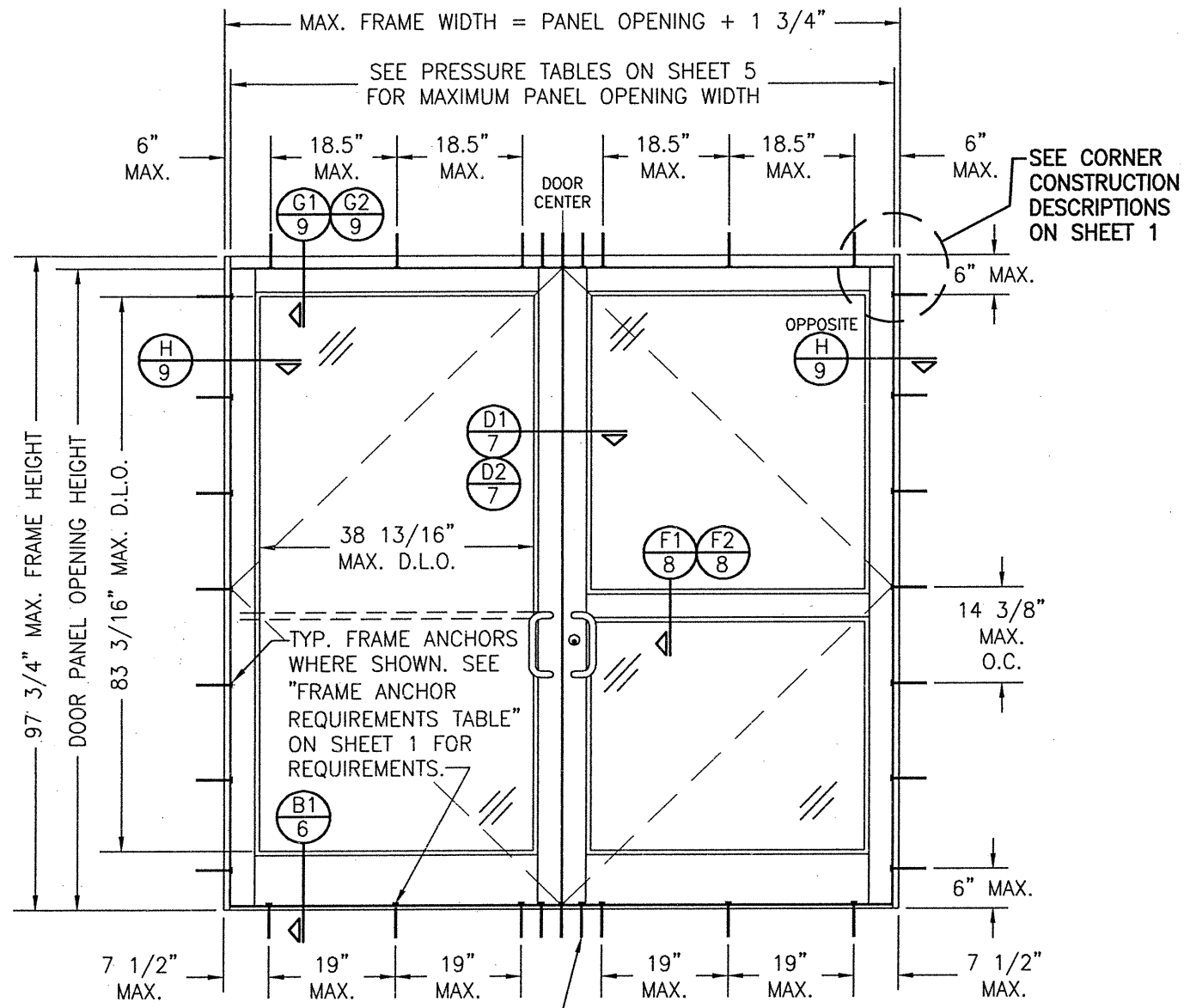
DRAWING TITLE: 350/500R OUTSWING ALUMINUM STOREFRONT DOORS - LMI DRY GLAZED

CONSULTANTS: W. W. SCHAEFER ENGINEERING & CONSULTING, P.A. (CA 6809)
 7480 150TH COURT NORTH
 PALM BEACH GARDENS, FL 33418
 PHONE: 561-744-3424

MANUFACTURER: KAWNEER COMPANY, INC.
 555 GUTHRIE COURT
 NORCROSS, GA 30092
 770-449-5555

CERTIFICATION: AUG 05 2021
 WARREN W. SCHAEFER, P.E.
 P.E. NO. 44135

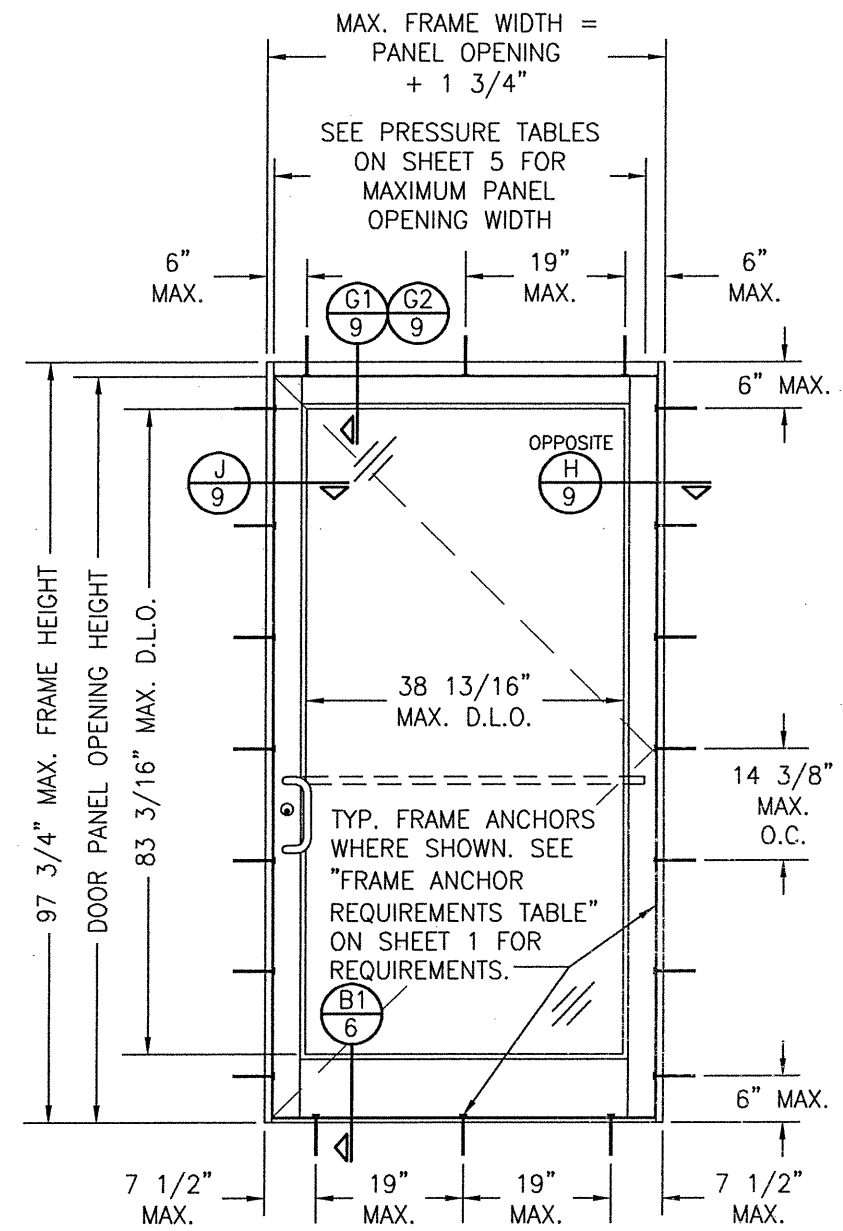
DRAWING NO.	REV.
1695	C
SHEET NO.	1 OF 13



**EXTERIOR ELEVATION:
DOUBLE DOOR WITH TRIFAB 450/451
FRAMING & STANDARD INSTALLATION**

SCALE: 1/2" = 1'-0"
(APPLICABLE WITH ALL HINGE TYPES)

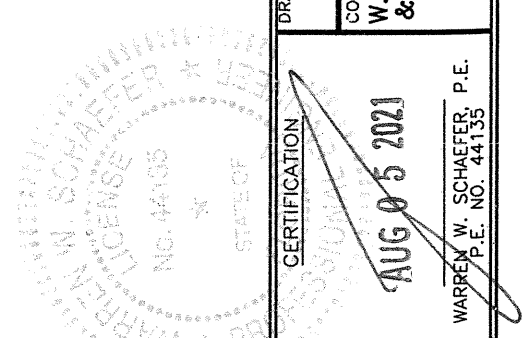
AT HEAD & SILL, CLUSTER ANCHORS AS SHOWN AT MEETING STILE ENDS SPACED 3" APART. CLUSTER 6 ANCHORS WITH ANCHOR TYPE A; CLUSTER 5 ANCHORS WITH ANCHOR TYPES B, C, D & F (ANCHOR "E" IS NOT APPLICABLE AT HEAD & SILL).



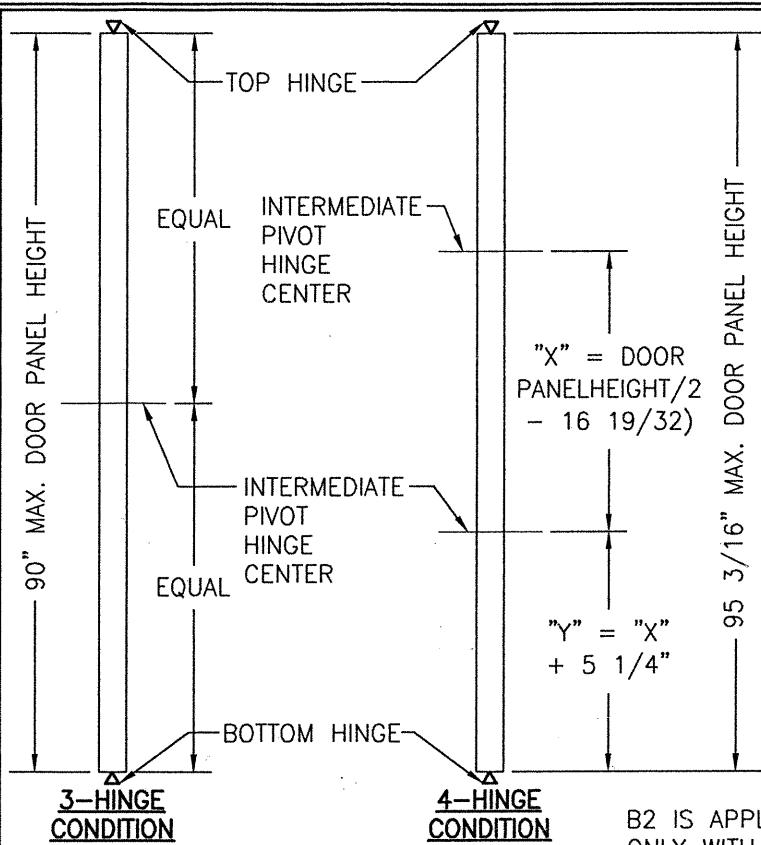
**EXTERIOR ELEVATION:
SINGLE DOOR WITH TRIFAB 450/451
FRAMING & STANDARD INSTALLATION**

SCALE: 1/2" = 1'-0"
(APPLICABLE WITH ALL HINGE TYPES)

ALLOWABLE DESIGN PRESSURE
SEE SHEET 5

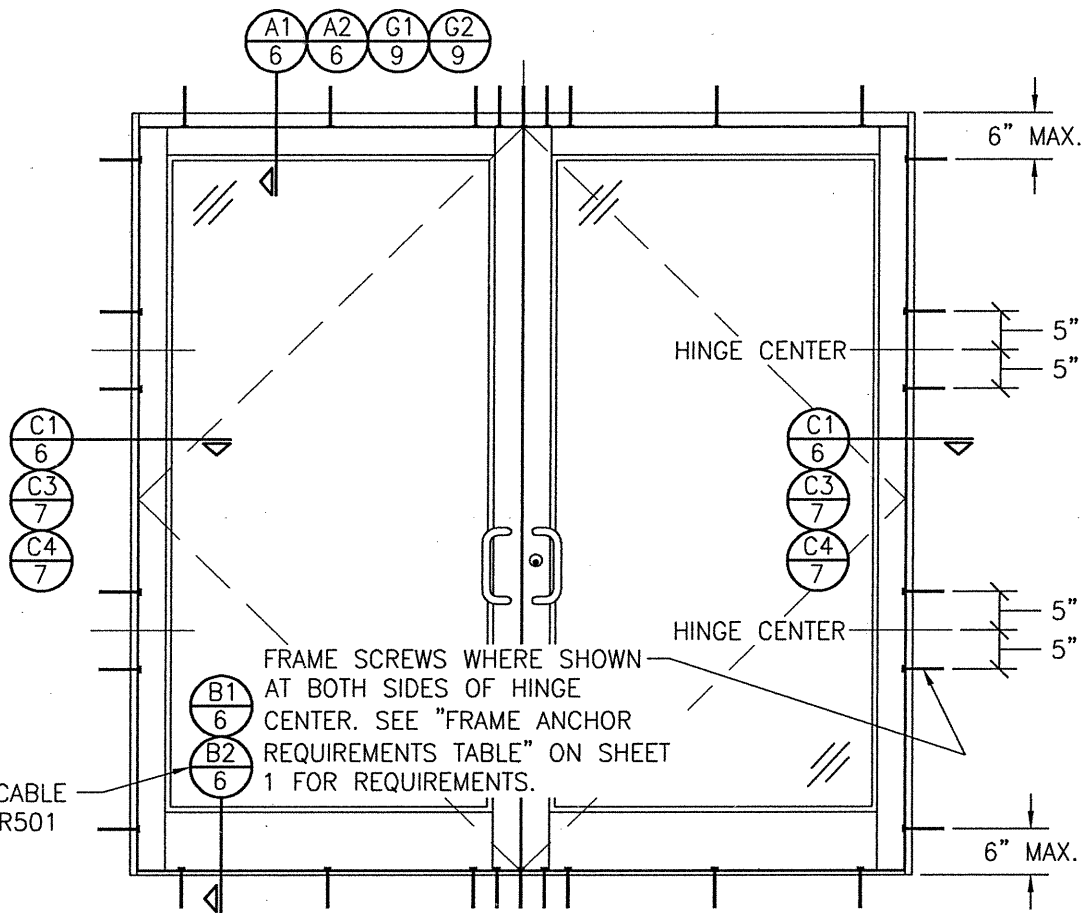


DRAWN BY: W.R.M.		CHECKED BY: W.W.S.	
PLOT: 1=24		DATE: 02/11/11	
NO.	REVISION DESCRIPTION	BY	DATE
DRAWING TITLE: 350/500R OUTSWING ALUMINUM STOREFRONT DOORS - LMI DRY GLAZED			
CONSULTANTS: W. W. SCHAEFER ENGINEERING & CONSULTING, P.A. (CA 6809) 7480 150TH COURT NORTH PALM BEACH GARDENS, FL 33418 PHONE: 561-744-3424			
MANUFACTURER: KAWNEER COMPANY, INC. 555 GUTHRIE COURT NORCROSS, GA 30092 770-449-5555			
CERTIFICATION	AUG 05 2021		
WARREN W. SCHAEFER, P.E. P.E. NO. 44135			
DRAWING NO.	1695	REV.	C
SHEET NO.	2 OF 13		



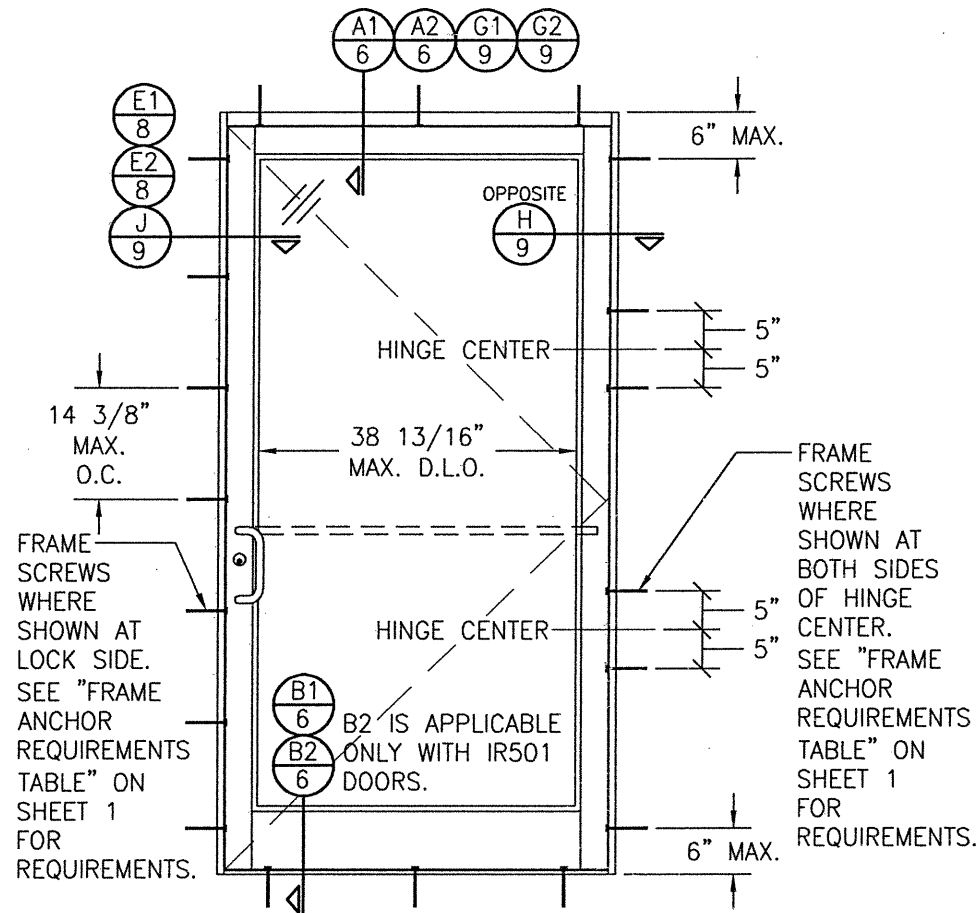
PIVOT HINGE LOCATION DIAGRAMS
(APPLICABLE TO ALL DOORS)

B2 IS APPLICABLE ONLY WITH IR501 DOORS.



EXTERIOR ELEVATION: DOUBLE DOOR WITH ALTERNATE INSTALLATION CONDITION

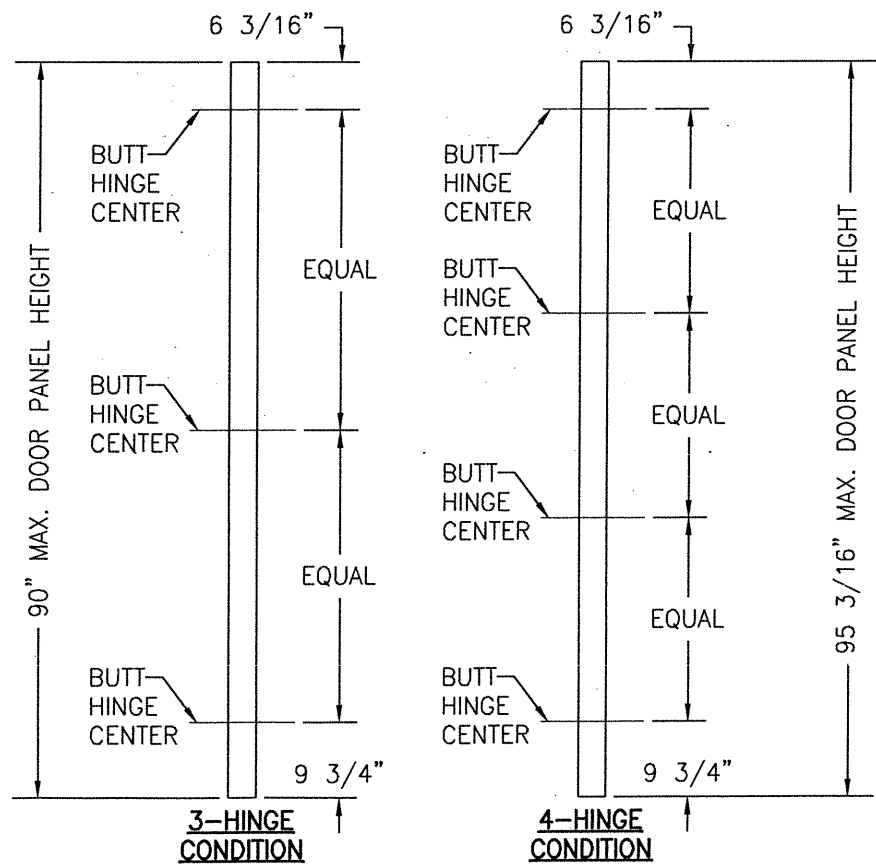
SCALE: 1/2" = 1'-0"
(APPLICABLE WITH BUTT & PIVOT HINGE DOORS ONLY WHEN 4 HINGES EXIST PER PANEL)
(FOR DOOR DETAIL & HARDWARE NOT SHOWN, SEE ELEVATIONS ON SHEETS 1 & 2)
(ELEVATION SHOWN WITH TRIFAB 450/451 FRAMING. IR500/501 FRAMING ALSO APPLIES)



EXTERIOR ELEVATION: SINGLE DOOR WITH ALTERNATE INSTALLATION CONDITION

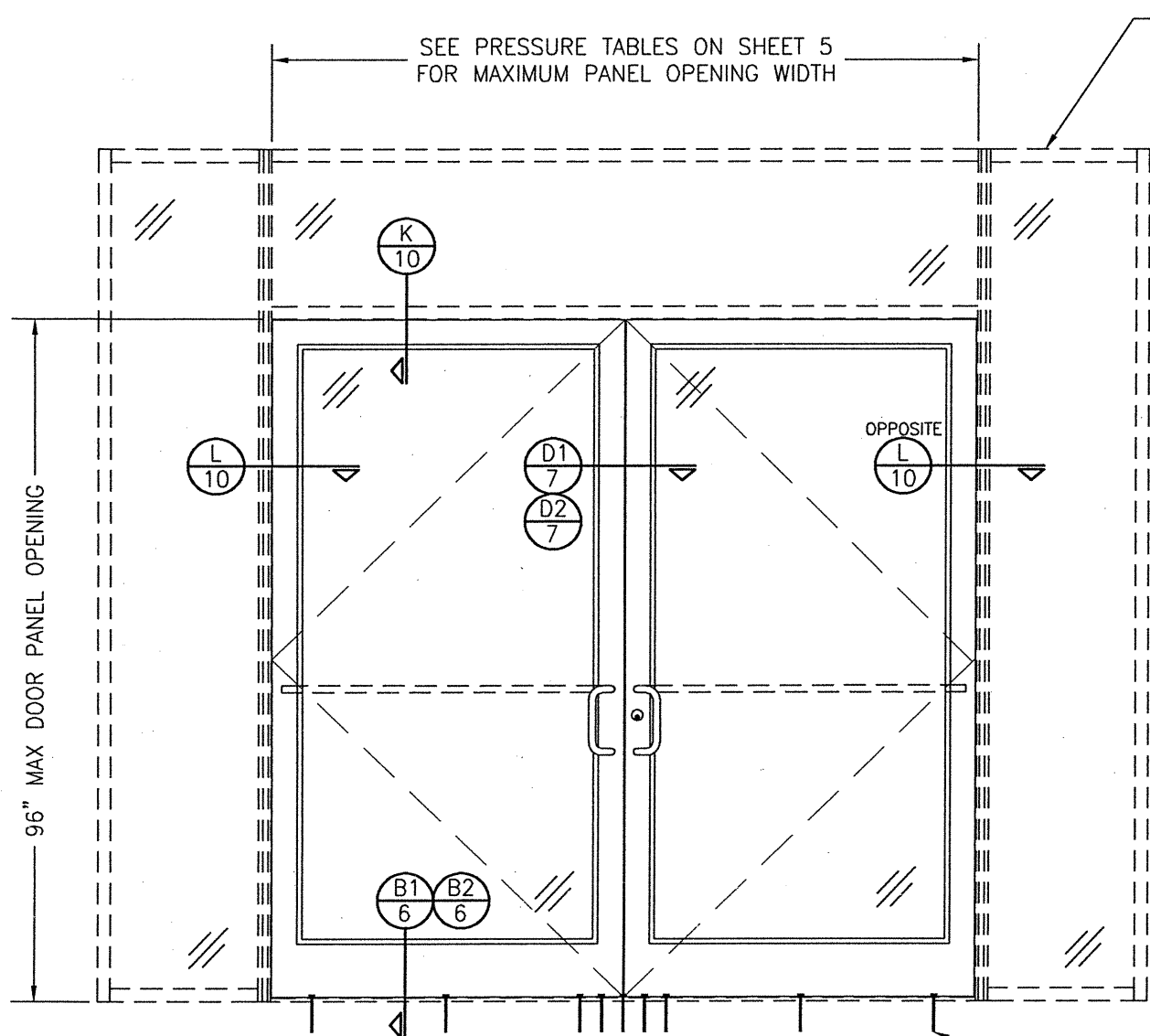
SCALE: 1/2" = 1'-0"
(APPLICABLE WITH BUTT & PIVOT HINGE DOORS ONLY WHEN 4 HINGES EXIST PER PANEL)
(FOR DOOR DETAIL & HARDWARE NOT SHOWN, SEE ELEVATIONS ON SHEETS 1 & 2)
(ELEVATION SHOWN WITH TRIFAB 450/451 FRAMING. IR500/501 FRAMING ALSO APPLIES)

ALLOWABLE DESIGN PRESSURE
SEE SHEET 5

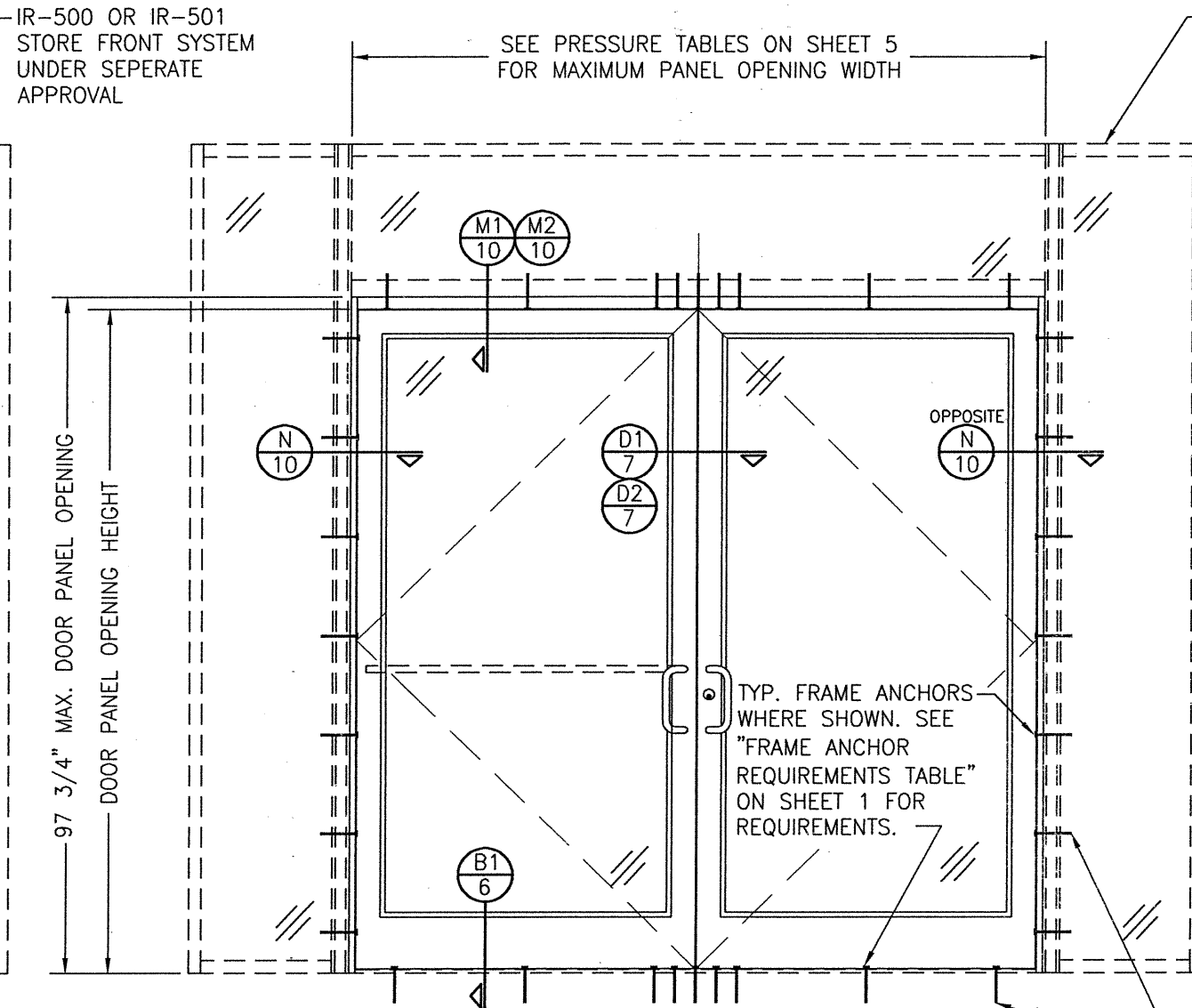


BUTT HINGE LOCATION DIAGRAMS
(APPLICABLE TO ALL DOORS)

DRAWING NO. 1695	REV. C	SHEET NO. 3 OF 13	CERTIFICATION AUG 05 2021 WARREN W. SCHAEFER, P.E. P.E. NO. 44193	CONSULTANTS W. W. SCHAEFER ENGINEERING & CONSULTING, P.A. (CA 6809) 7480 150TH COURT NORTH PALM BEACH GARDENS, FL 33418 PHONE: 561-744-3424	MANUFACTURER KAWNEER COMPANY, INC. 555 GUTHRIDGE COURT NORCROSS, GA 30092 770-449-5555	DRAWN BY: W.R.M. CHECKED BY: W.W.S. PLOT: 1=24 DATE: 02/11/11
						REVISION DESCRIPTION NO. BY DATE



EXTERIOR ELEVATION:
DOORS INSIDE IR-500 OR IR-501 STORE FRONT SYSTEM
 SCALE: 1/2"=1'-0"



EXTERIOR ELEVATION:
DOORS INSIDE 1600 SYSTEM 1 CURTAIN WALL
 SCALE: 1/2"=1'-0"

NOTES:

1. FOR DETAILS NOT SHOWN, SEE ELEVATIONS ON SHEETS 1 & 3.
2. DOUBLE DOOR SHOWN; SINGLE DOOR CONDITION ALSO APPLIES.
3. FOR STORE FRONT FRAMING REQUIREMENTS & INSTALLATION, SEE RESPECTIVE STORE FRONT APPROVAL.
4. LESSER ALLOWABLE PRESSURE RATING OF THE DOORS & STOREFRONT SHALL CONTROL FOR THE OVERALL ASSEMBLY.

SEE ELEVATION SHEET 1 FOR SILL ANCHOR REQUIREMENTS & ANCHOR LOCATIONS

ALLOWABLE DESIGN PRESSURE
 SEE SHEET 5

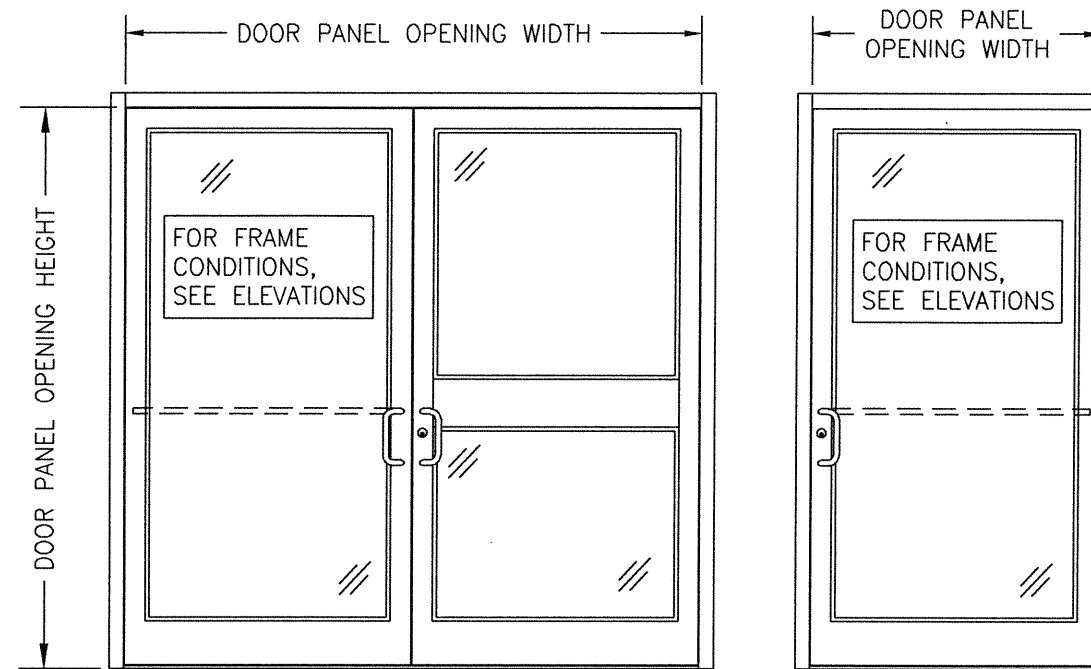
NOTES:

1. FOR DETAILS NOT SHOWN, SEE ELEVATIONS ON SHEETS 2 & 3.
2. DOUBLE DOOR SHOWN; SINGLE DOOR CONDITION ALSO APPLIES.
3. FOR STORE FRONT FRAMING REQUIREMENTS & INSTALLATION, SEE RESPECTIVE STORE FRONT APPROVAL.
4. LESSER ALLOWABLE PRESSURE RATING OF THE DOORS & STOREFRONT SHALL CONTROL FOR THE OVERALL ASSEMBLY.

SEE ELEVATION SHEET 2 FOR ANCHOR REQUIREMENTS & ANCHOR LOCATIONS

DRAWN BY: W.R.M.		CHECKED BY: W.W.S.	
PLOT: 1=24		DATE: 02/11/11	
NO.	REVISION	DESCRIPTION	DATE
DRAWING TITLE: 350/500IR OUTSWING ALUMINUM STOREFRONT DOORS - LMI DRY GLAZED			
CONSULTANTS		MANUFACTURER	
W. W. SCHAEFER ENGINEERING & CONSULTING, P.A. (CA 6809) 7480 150TH COURT NORTH PALM BEACH GARDENS, FL 33418 PHONE: 561-744-3424		KAWNEER COMPANY, INC. 555 GUTHRIDGE COURT NORCROSS, GA 30092 770-449-5555	
CERTIFICATION	AUG 05 2021		WARREN W. SCHAEFER, P.E. P.E. NO. 44133
DRAWING NO.	1695	REV.	C
SHEET NO.	4 OF 13		

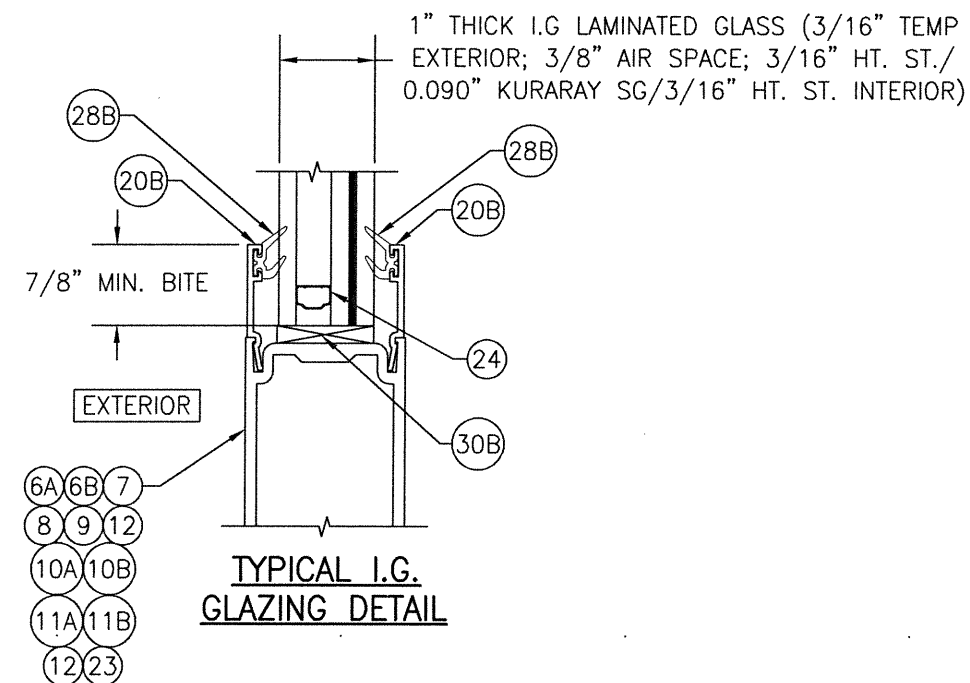
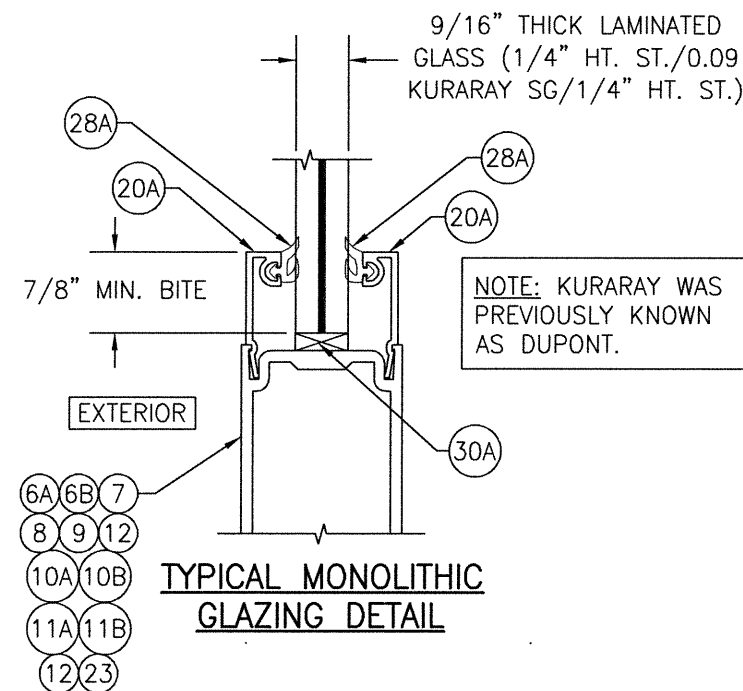
ALLOWABLE DESIGN PRESSURE (AS RESTRICTED BY PANIC DEVICE LOCK CONDITIONS)			
MAXIMUM DOOR PANEL OPENING WIDTH (IN.)		PANIC DEVICE	ALLOWABLE PRESSURE (+/-PSF)
DOUBLE DOOR	SINGLE DOOR		
96	48	SARGENT AD8400	70
		ADAMS RITE G86	
		CALIBRE 9100	
		JACKSON 2086	
		KAWNEER 1686	
	PANELINE CR-90		
96	48	SARGENT 8400	65
72	36	FALCON HH1690	65
96	48	CORBIN RUSSWIN ED5200S(A)	50
96	48	VON DUPRIN HH9947	65



ALLOWABLE DESIGN PRESSURE (AS RESTRICTED BY MULTI-POINT LOCK CONDITIONS)			
MAXIMUM DOOR PANEL OPENING WIDTH (IN.)		LOCK CONDITION	ALLOWABLE PRESSURE (+/-PSF)
DOUBLE DOOR	SINGLE DOOR		
96	48	1 & 2	70

LOCK CONDITION 1:
ACTIVE DOOR: SEE ITEM #39 ON SHEET 13 FOR LOCK REQUIREMENTS
INACTIVE DOOR: SEE ITEM #40 ON SHEET 13 FOR LOCK REQUIREMENTS

LOCK CONDITION 2:
ACTIVE DOOR: SEE ITEM #41 ON SHEET 13 FOR LOCK REQUIREMENTS
INACTIVE DOOR: SEE ITEM #42 ON SHEET 13 FOR LOCK REQUIREMENTS



PRESSURE TABLE NOTES (ALL TABLES)

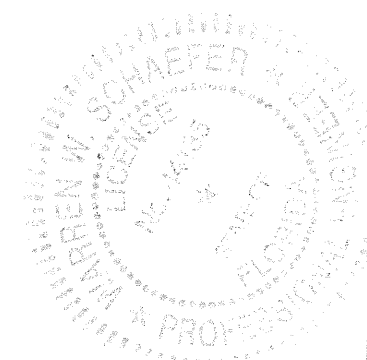
1. CONDITIONS IN THESE TABLES ARE APPLICABLE FOR ALL DOORS TO THEIR MAXIMUM PANEL HEIGHT OF 96".
2. SEE ELEVATIONS ON THIS SHEET FOR VIEW OF DOOR PANEL OPENING HEIGHT & WIDTH.
3. THE LESSER PRESSURE IN ANY ONE TABLE SHALL CONTROL AS THE ALLOWABLE PRESSURE ON THE DOOR ASSEMBLY.

DRAWN BY: W.R.M.	CHECKED BY: W.W.S.
PLOT: 1=24	DATE: 02/11/11
NO.	REVISION DESCRIPTION
DATE	
BY	

DRAWING TITLE: 350/500IR OUTSWING ALUMINUM STOREFRONT DOORS - LMI DRY GLAZED

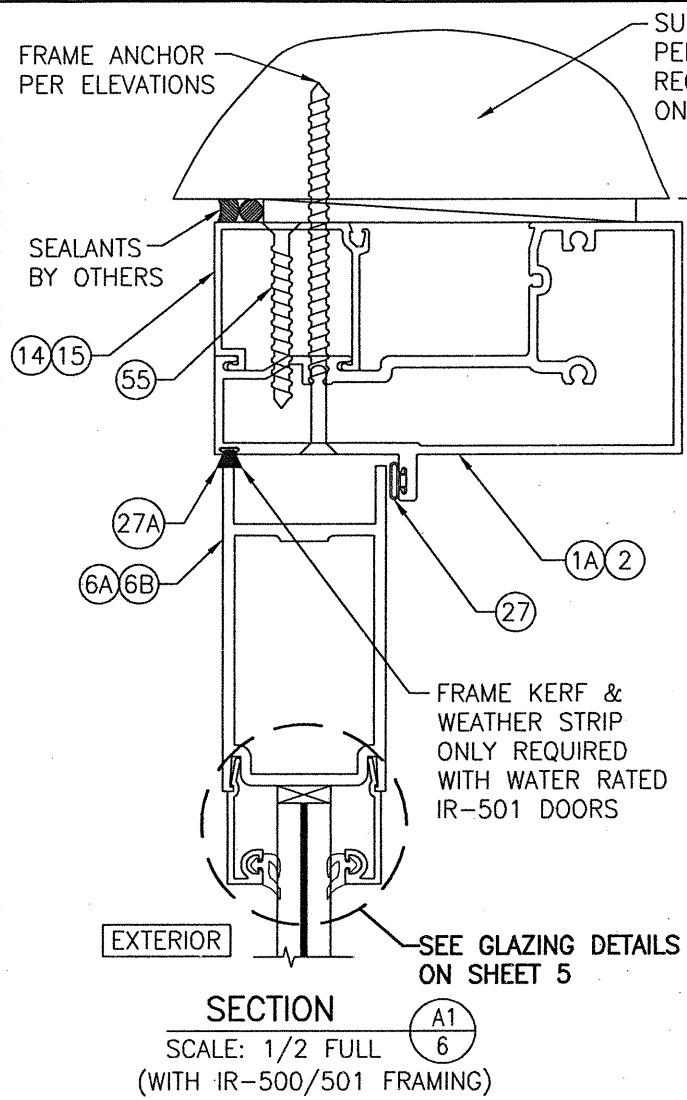
MANUFACTURER: KAWNEER COMPANY, INC.
555 GUTHRIDGE COURT
NORCROSS, GA 30092
770-449-5555

CONSULTANTS: W. W. SCHAEFER ENGINEERING & CONSULTING, P.A. (CA 6809)
7480 150TH COURT NORTH
PALM BEACH GARDENS, FL 33418
PHONE: 561-744-3424

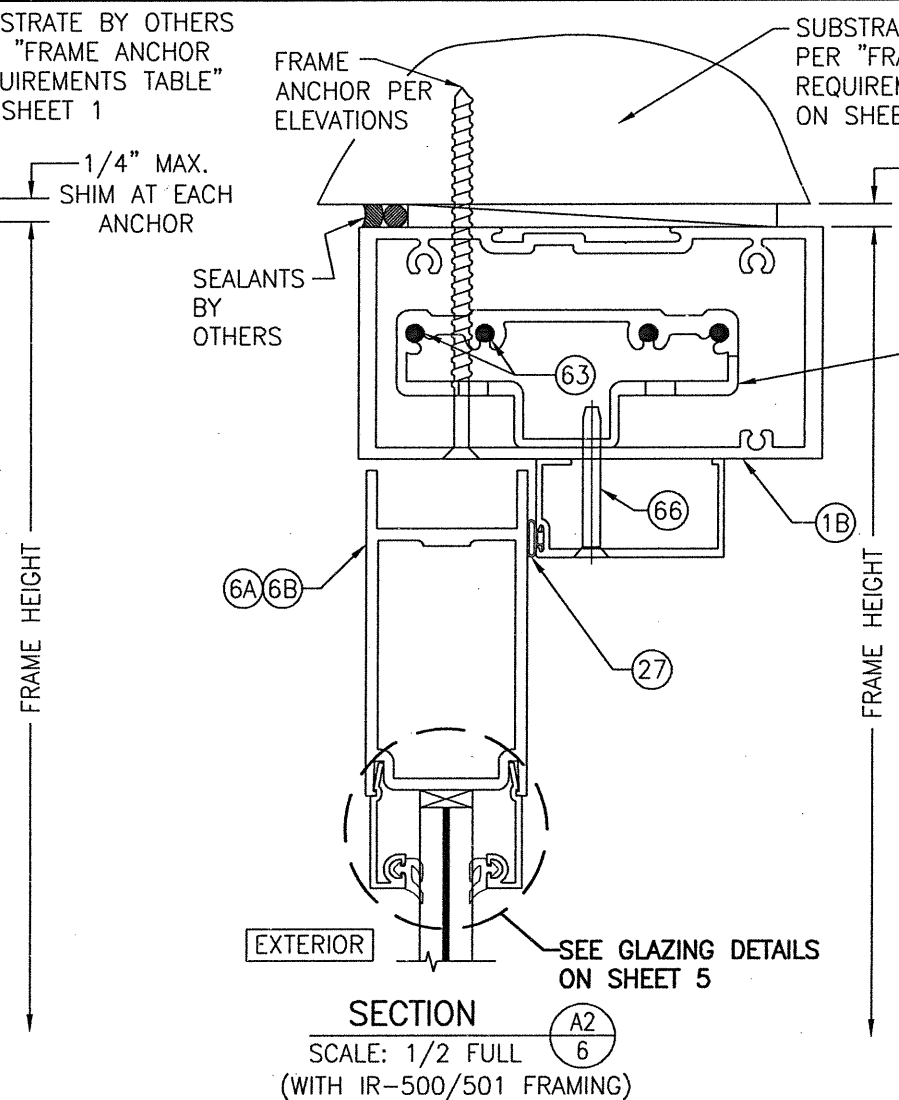


CERTIFICATION: AUG 05 2021
WARREN W. SCHAEFER, P.E.
P.E. NO. 44135

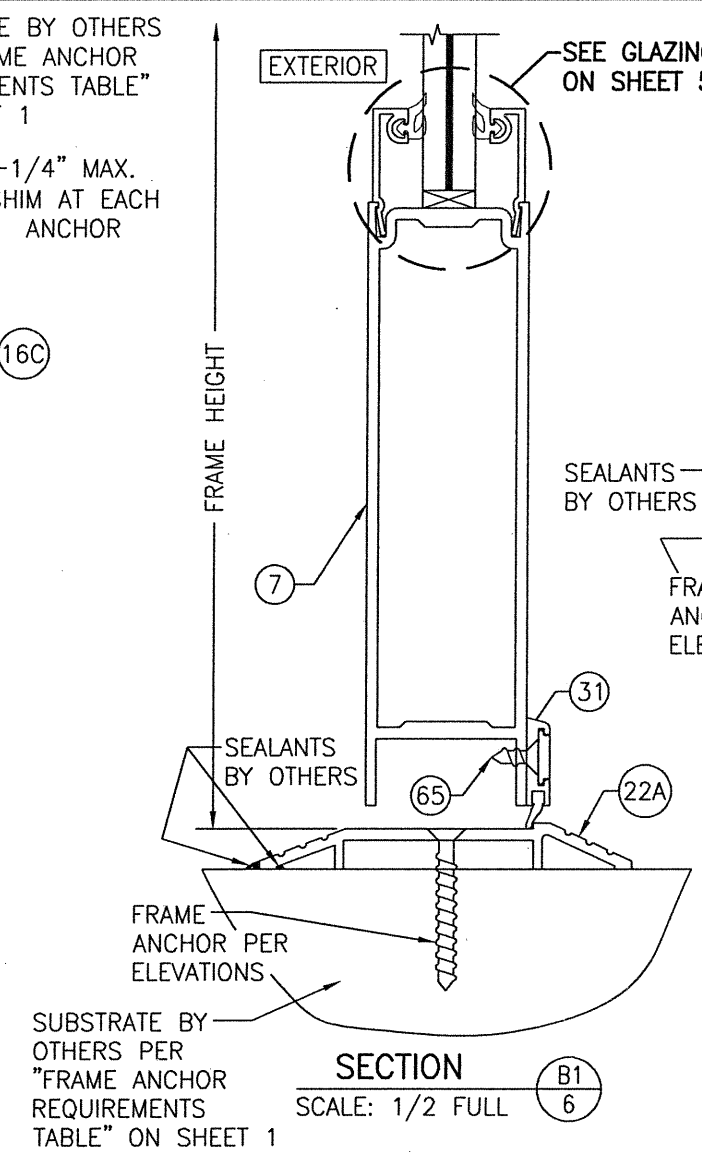
DRAWING NO. 1695	REV. C
SHEET NO. 5 OF 13	



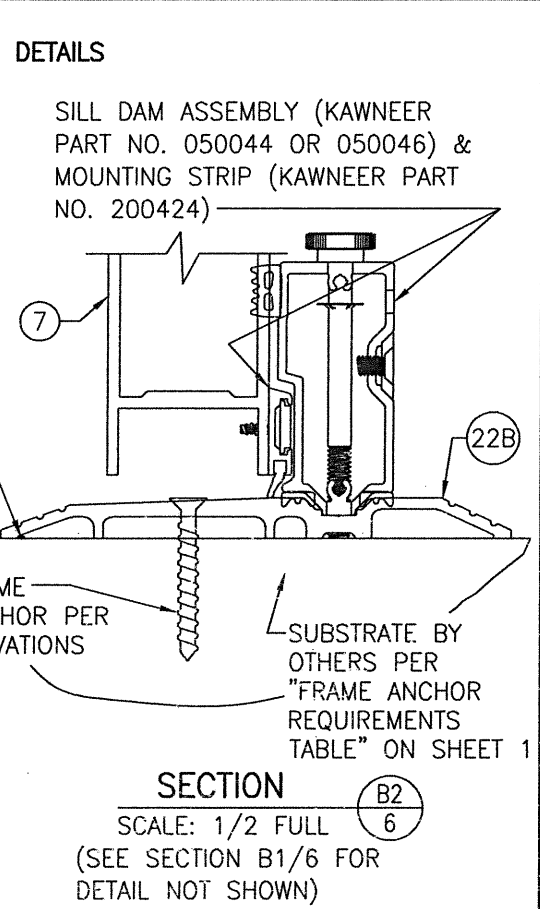
SECTION A1
SCALE: 1/2 FULL
(WITH IR-500/501 FRAMING)



SECTION A2
SCALE: 1/2 FULL
(WITH IR-500/501 FRAMING)

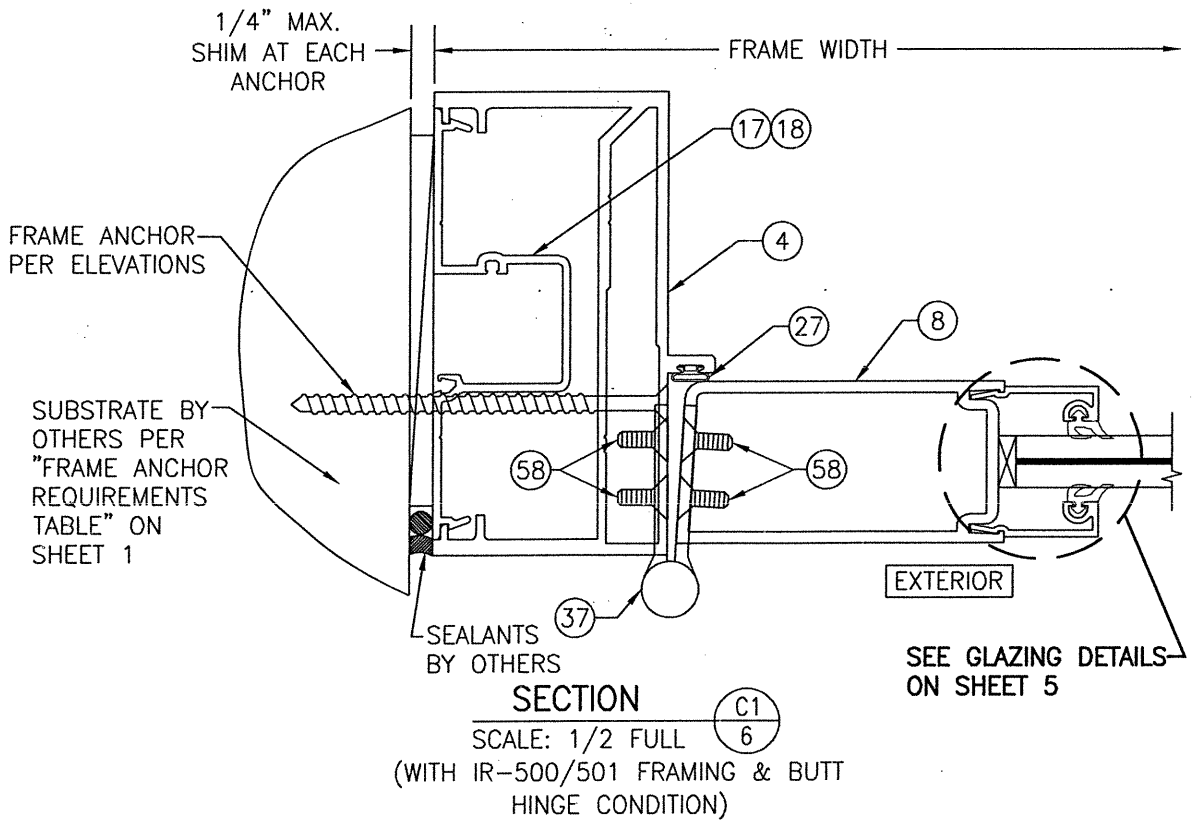


SECTION B1
SCALE: 1/2 FULL

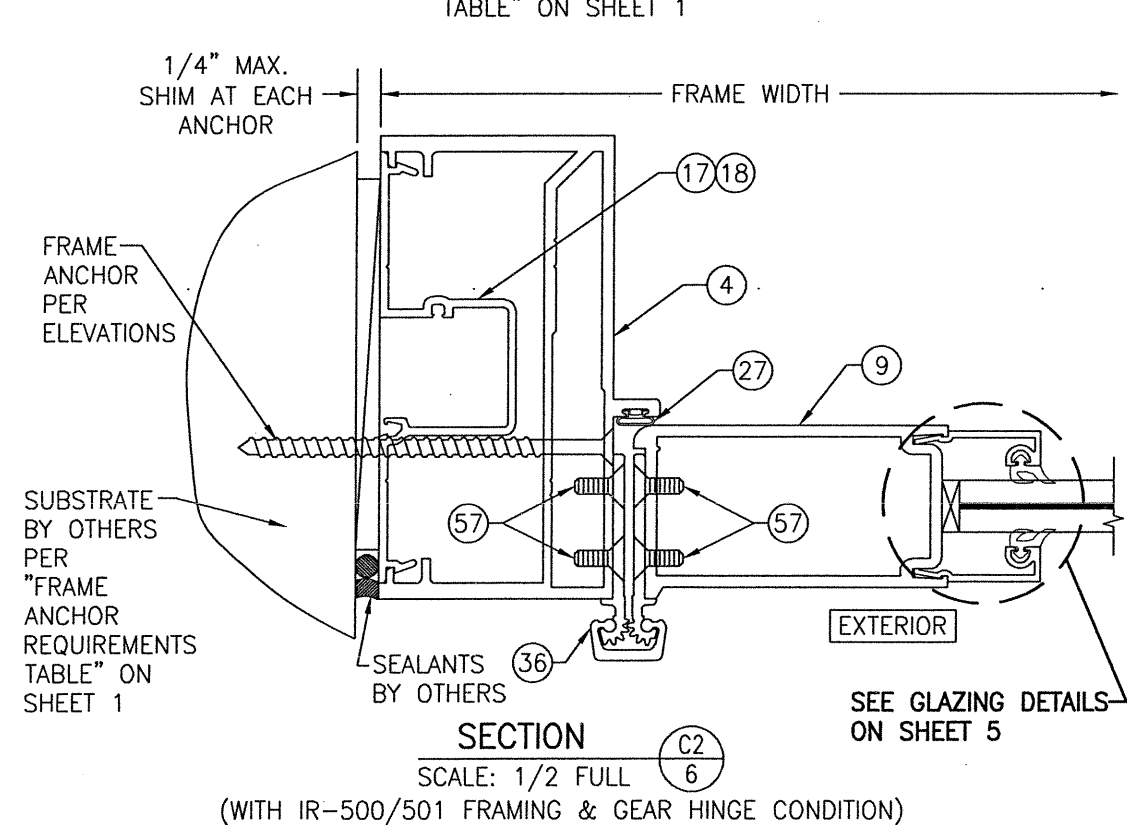


SECTION B2
SCALE: 1/2 FULL
(SEE SECTION B1/6 FOR
DETAIL NOT SHOWN)

- NOTES:**
- SILL 22B MAY BE USED WITH OR WITHOUT THE SILL DAM. WHEN WITHOUT THE DAM, A CAP IS PLACED OVER THE SILL RECESS. SILL IS WATER RATED ONLY WITH THE DAM ASSEMBLY & WHEN USED WITH THE IR-501 DOOR.
 - IT SHALL BE THE DOOR OWNERS RESPONSIBILITY TO INSURE THE SILL DAM IS INSTALLED IN THE EVENT OF ANY MAJOR STORM.

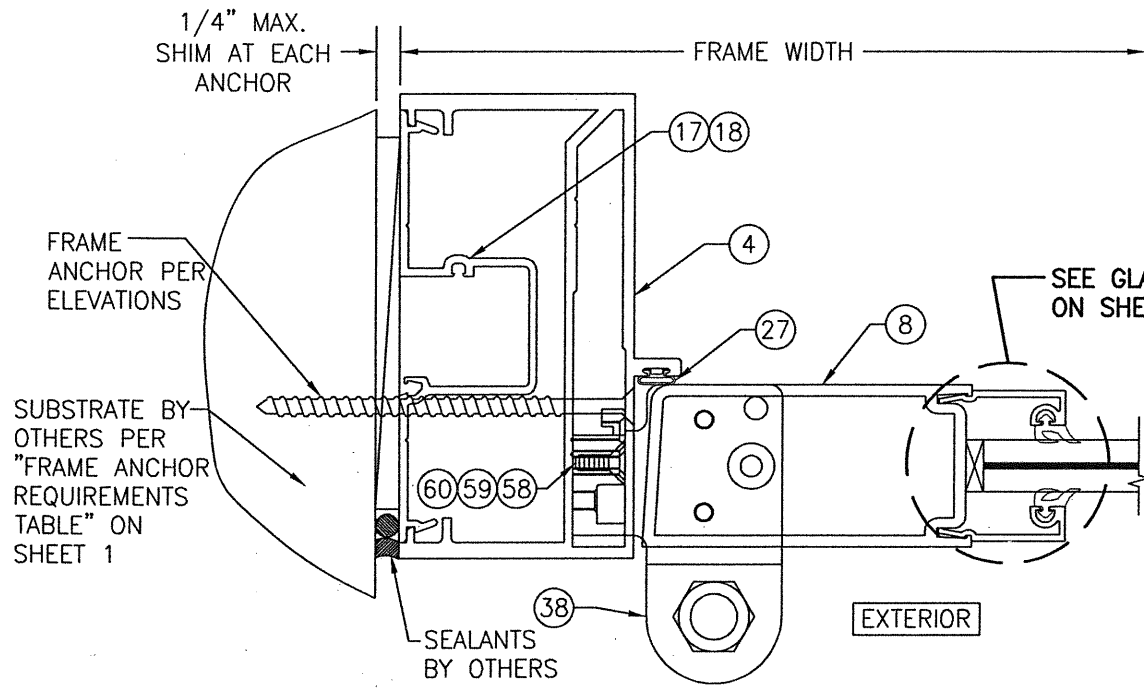


SECTION C1
SCALE: 1/2 FULL
(WITH IR-500/501 FRAMING & BUTT
HINGE CONDITION)

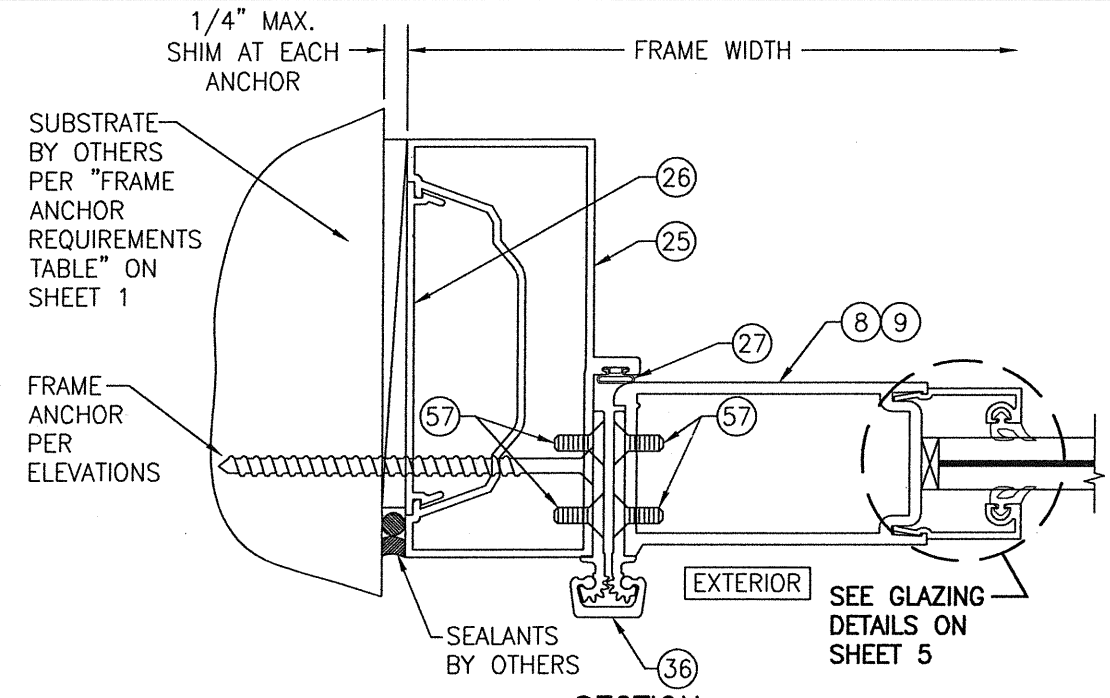


SECTION C2
SCALE: 1/2 FULL
(WITH IR-500/501 FRAMING & GEAR
HINGE CONDITION)

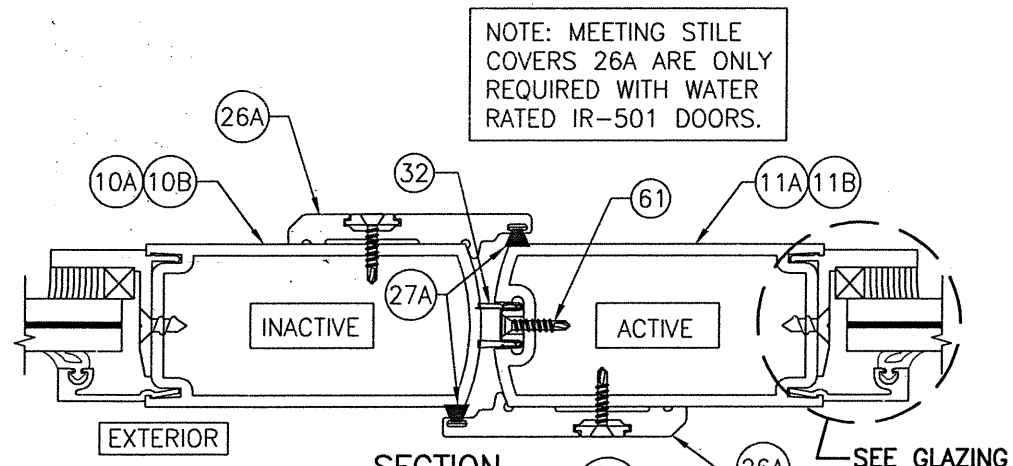
DRAWN BY: W.R.M.	CHECKED BY: W.W.S.
PLOT: 1=2	DATE: 02/11/11
DATE	
BY	
REVISION DESCRIPTION	
NO.	
DRAWING TITLE: 350/500R OUTSWING ALUMINUM STOREFRONT DOORS - 1	
MANUFACTURER: KAWNEER COMPANY, INC. 555 GUTHRIDGE COURT NORCROSS, GA 30092 770-449-5555	
CONSULTANTS: W. W. SCHAEFER ENGINEERING & CONSULTING, P.A. (CA 6809) 7480 150TH COURT NORTH PALM BEACH GARDENS, FL 33418 PHONE: 561-744-3424	
CERTIFICATION: AUG 05 2021 WARREN W. SCHAEFER, P.E. P.E. NO. 44135	
DRAWING NO. 1695	REV. C
SHEET NO. 6 OF 13	



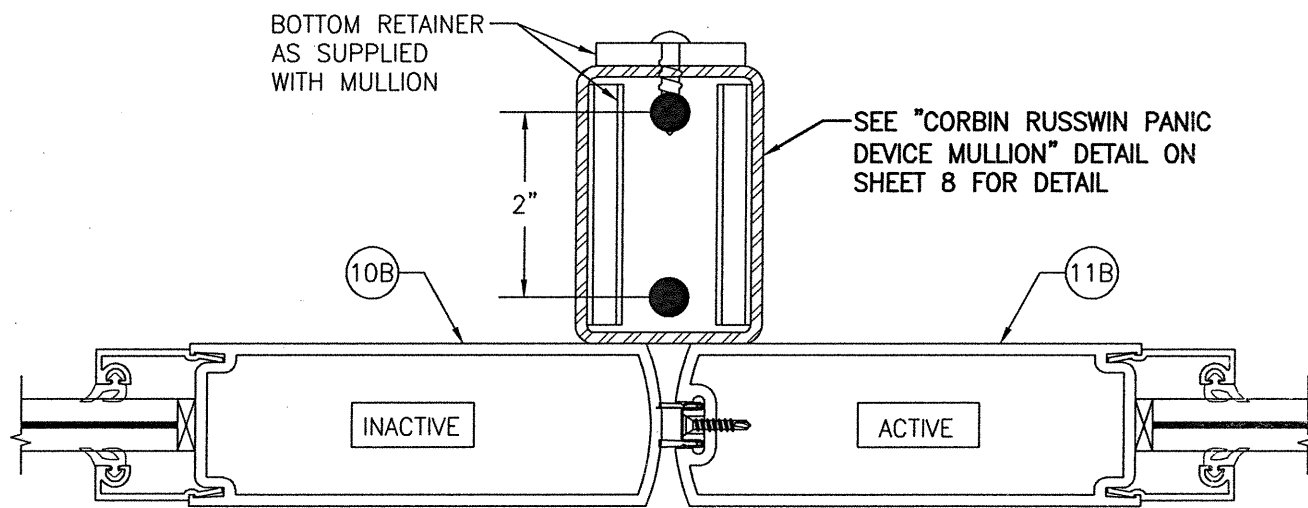
SECTION C3
 SCALE: 1/2 FULL
 (WITH IR-500/501 FRAMING & PIVOT HINGE CONDITION)



SECTION C4
 SCALE: 1/2 FULL
 (WITH TRIFAB 450/451 FRAMING)
 (GEAR HINGE CONDITION SHOWN. FOR OTHER HINGE CONDITIONS APPLICABLE TO THIS SECTION, SEE SECTIONS C1/6 & C3/7.)



SECTION D1
 SCALE: 1/2 FULL
 (APPLICABLE WITH ALL LOCK CONDITIONS WITH THE EXCEPTION OF CORBIN RUSSWIN PANIC DEVICE ITEM #54)



SECTION D2
 SCALE: 1/2 FULL
 (FOR DETAIL NOT SHOWN, SEE SECTION D1/7)
 (APPLICABLE WITH CORBIN RUSSWIN PANIC DEVICE ITEM #54 ONLY)

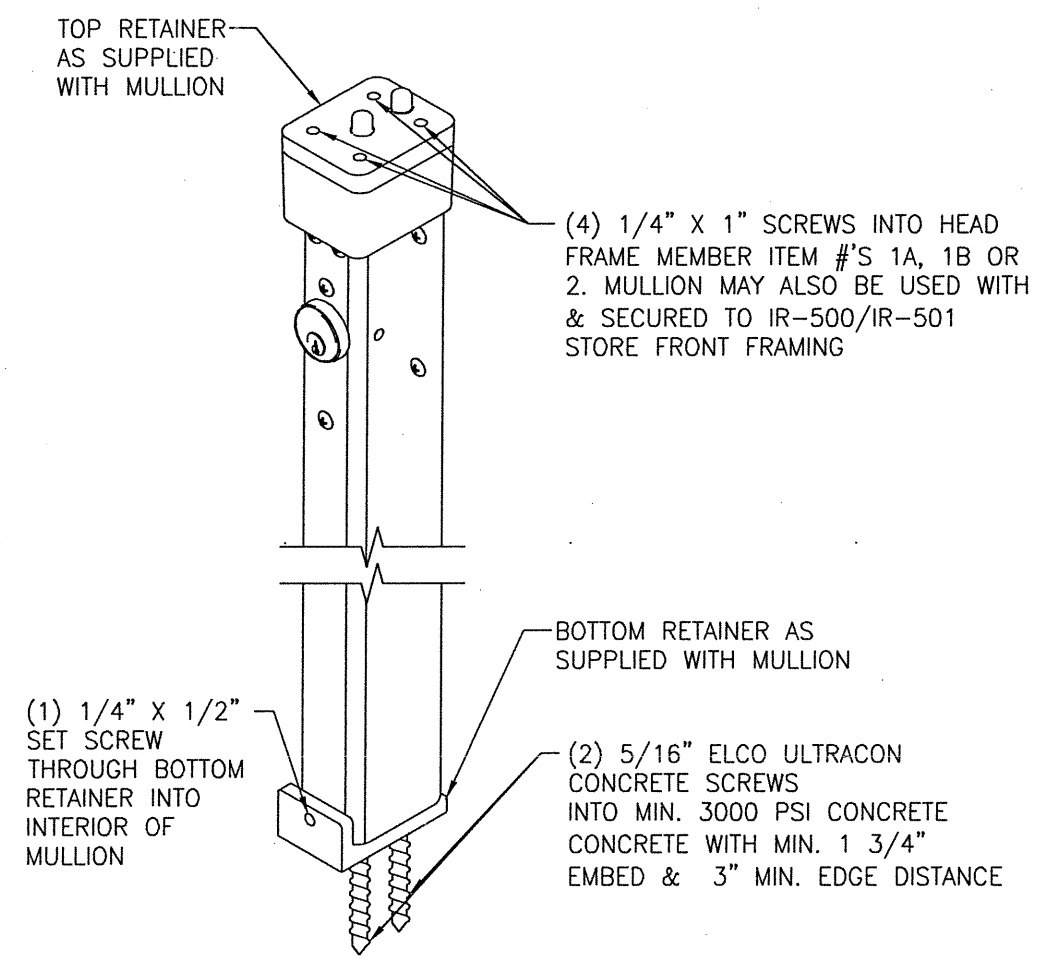
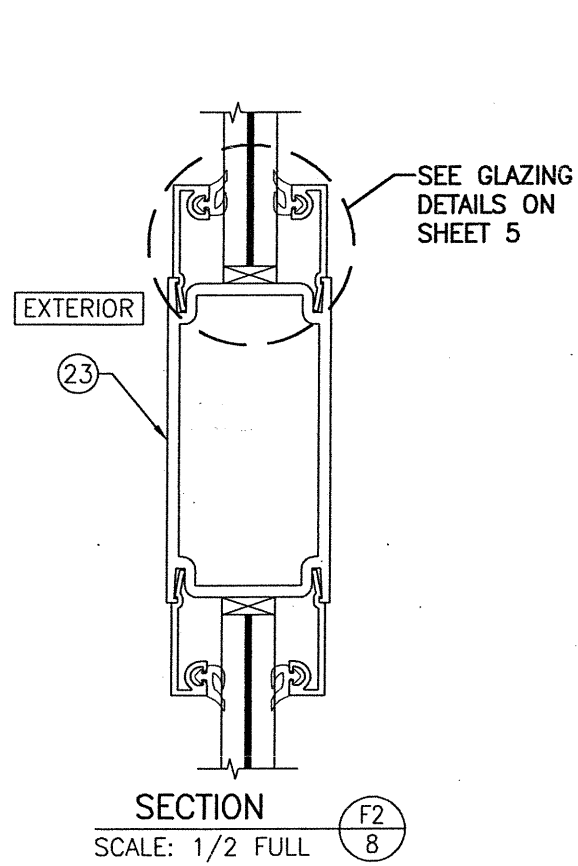
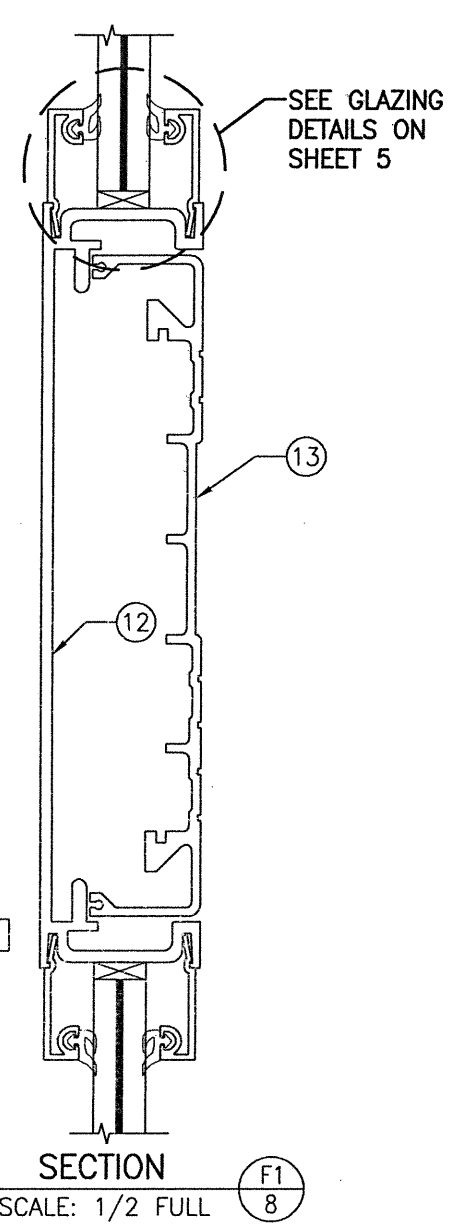
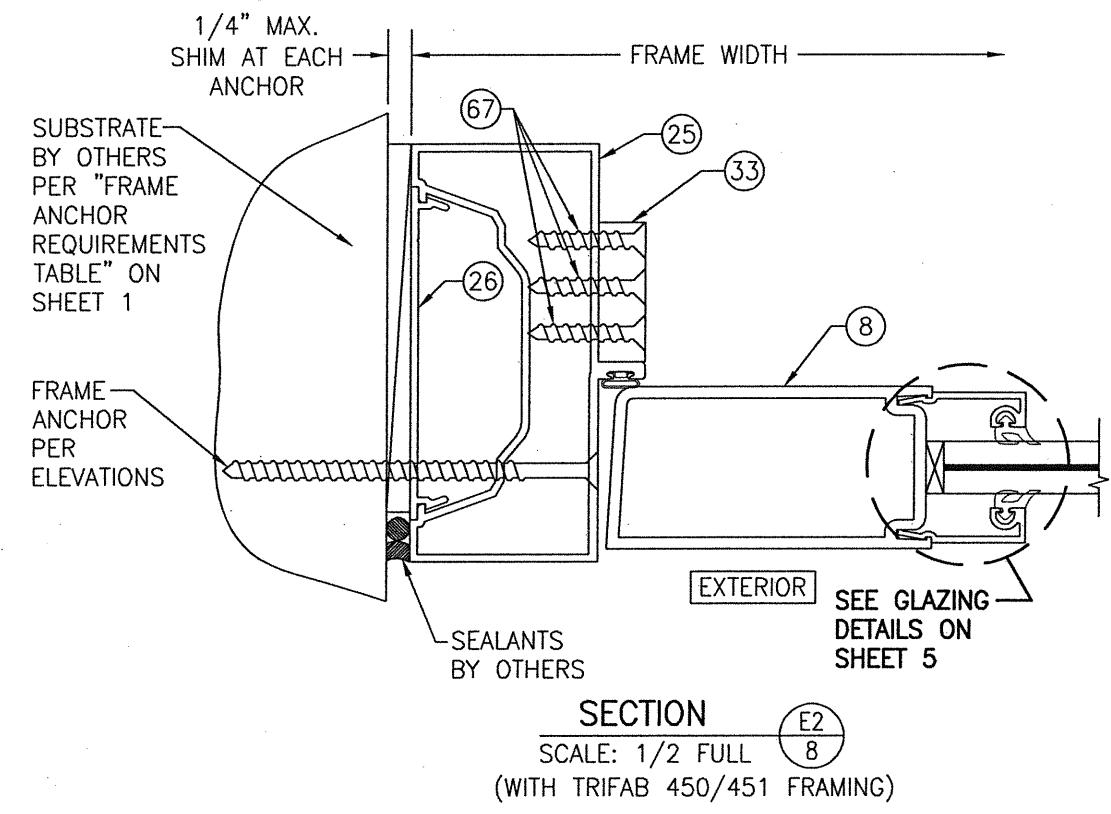
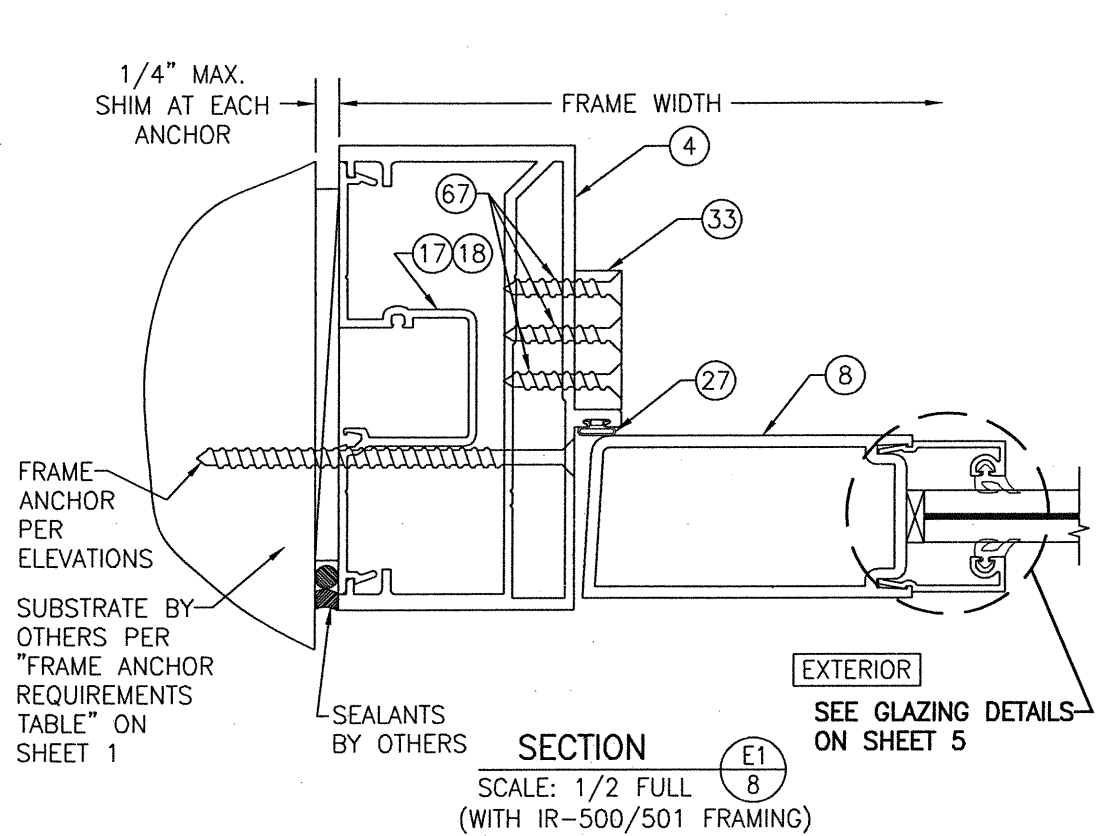
DRAWN BY: W.R.M.	CHECKED BY: W.W.S.
PLOT: 1=2	DATE: 02/11/11
NO.	DATE
BY	
REVISION DESCRIPTION	

DRAWING TITLE: 350/500IR OUTSWING ALUMINUM STOREFRONT DOORS
 LMI DRY GLAZED

CONSULTANTS
W. W. SCHAEFER ENGINEERING & CONSULTING, P.A. (CA 6809)
 7480 150TH COURT NORTH
 PALM BEACH GARDENS, FL 33418
 PHONE: 561-744-3424

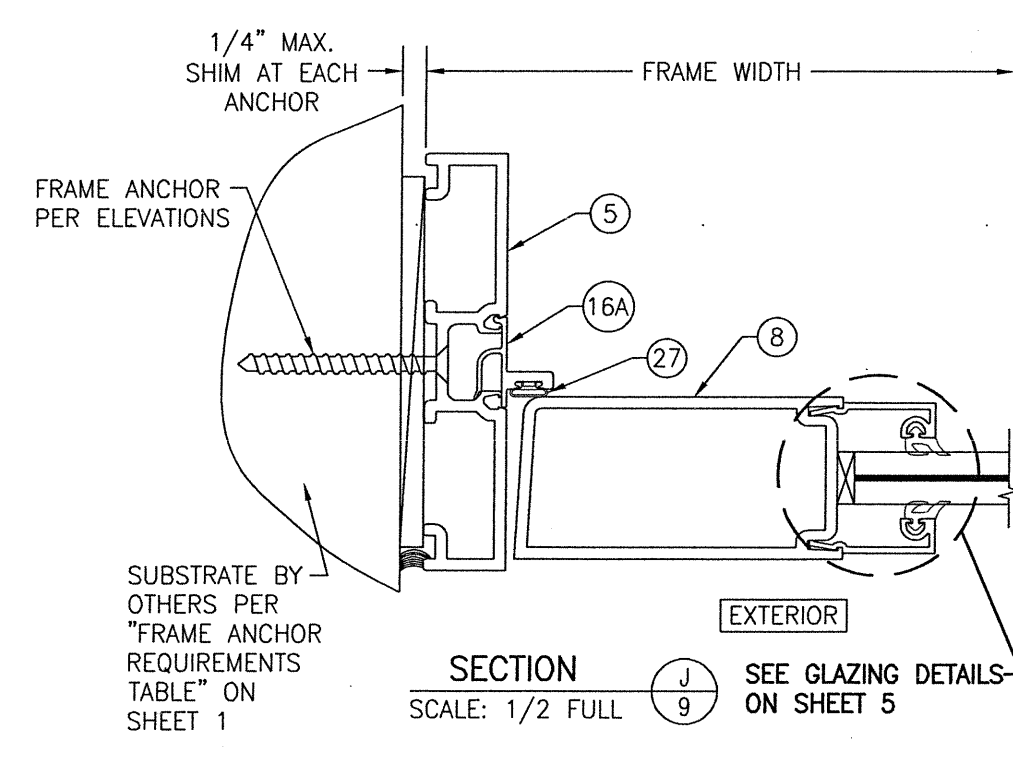
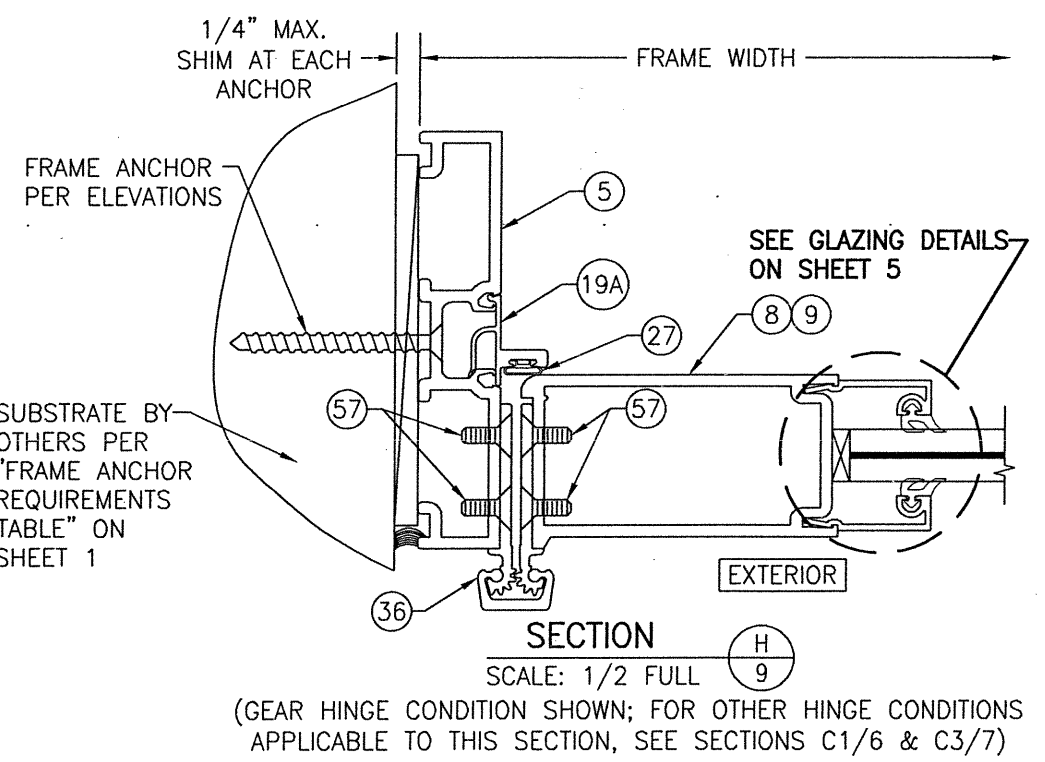
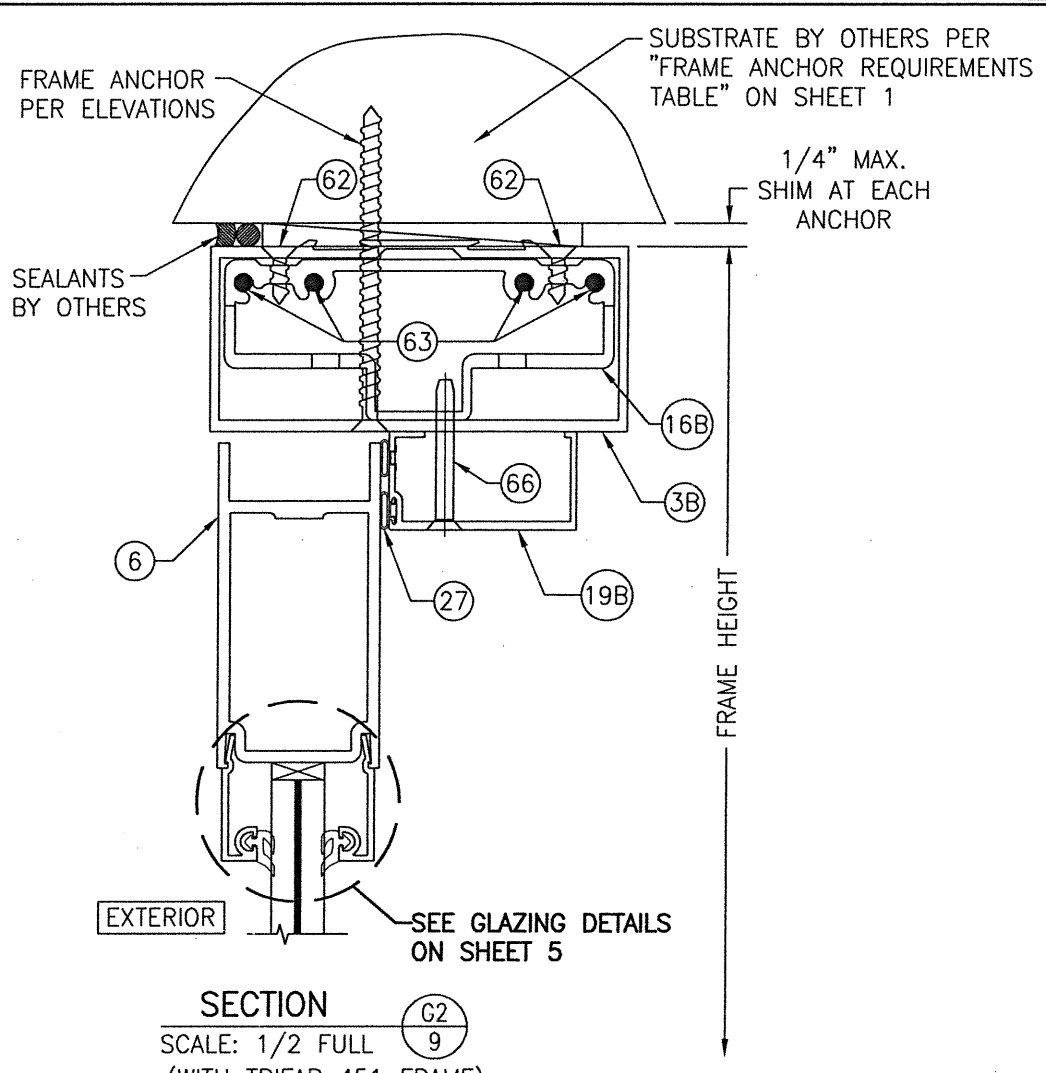
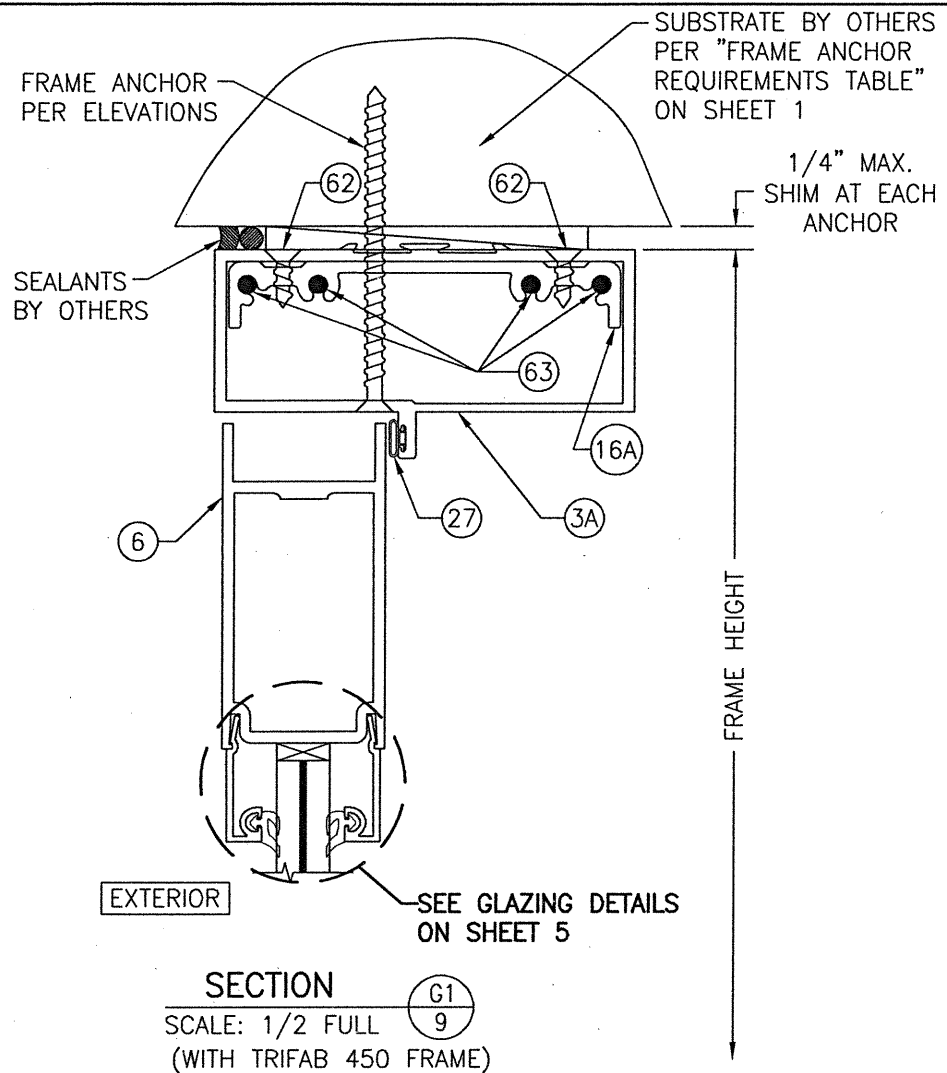
MANUFACTURER
KAWNEER COMPANY, INC.
 555 GUTHRIDGE COURT
 NORCROSS, GA 30092
 770-449-5555

CERTIFICATION
 AUG 05 2021
 WARREN W. SCHAEFER, P.E.
 P.E. NO. 44135



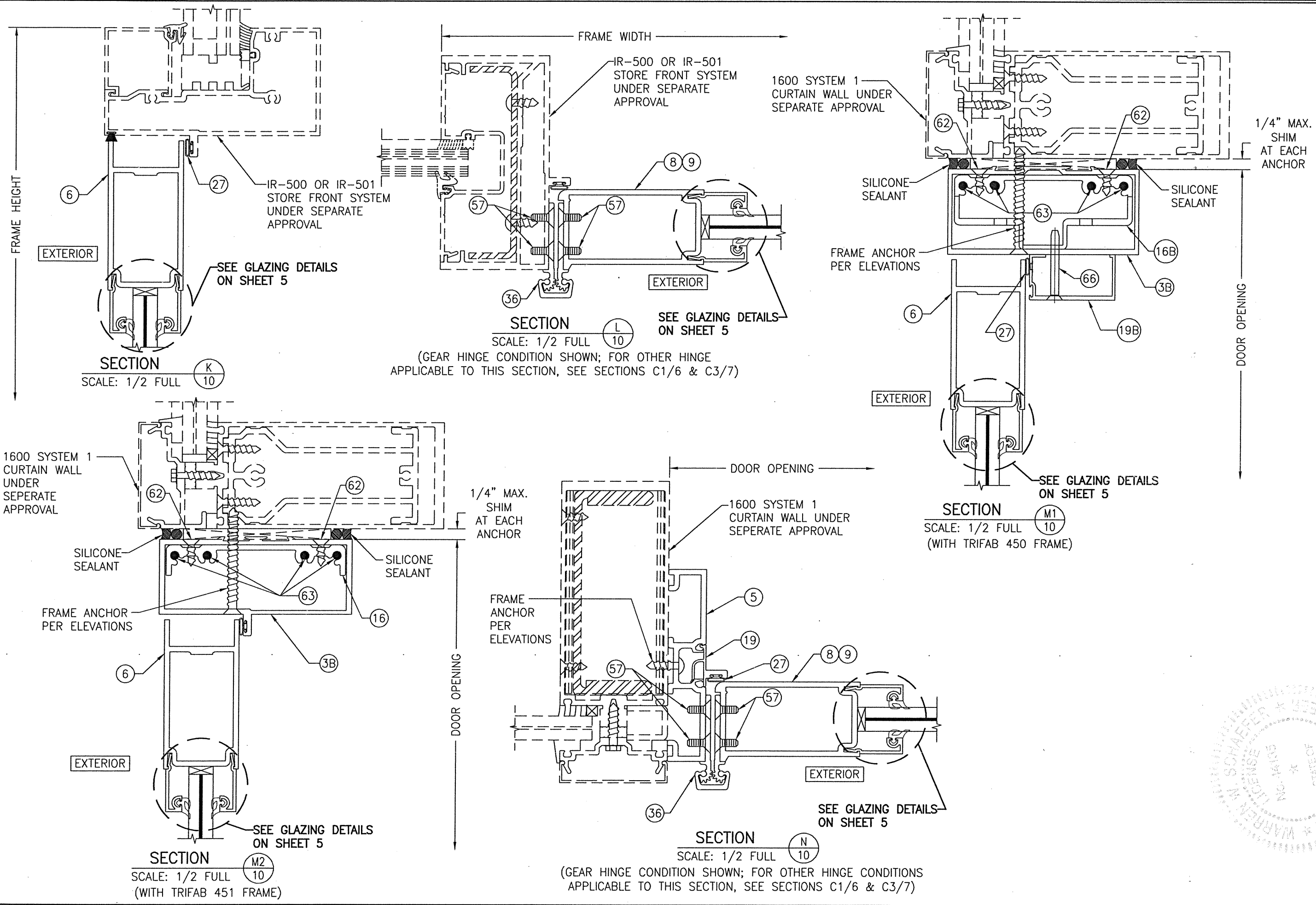
CORBIN RUSSWIN WS708AKM KEYED INTERIOR MULLION
 (KEYED LOCK SHOWN IS AT INTERIOR)
 (APPLICABLE WITH CORBIN RUSSWIN ITEM #54 ONLY)

DRAWN BY: W.R.M.		CHECKED BY: W.W.S.	
PLOT: 1-2		DATE: 02/11/11	
NO.	REVISION DESCRIPTION	DATE	BY
DRAWING TITLE: 350/500IR OUTSWING ALUMINUM STOREFRONT DOORS - LMI DRY GLAZED			
CONSULTANTS: W. W. SCHAEFER ENGINEERING & CONSULTING, P.A. (CA 6809) 7480 150TH COURT NORTH, 33418 PALM BEACH GARDENS, FL PHONE: 561-744-3424			
MANUFACTURER: KAWNEER COMPANY, INC. 555 GUTHRIDGE COURT NORCROSS, GA 30092 770-449-5555			
CERTIFICATION: WARREN W. SCHAEFER, P.E. AUG 05 2021			
DRAWING NO. 1695		REV. C	
SHEET NO. 8 OF 13			

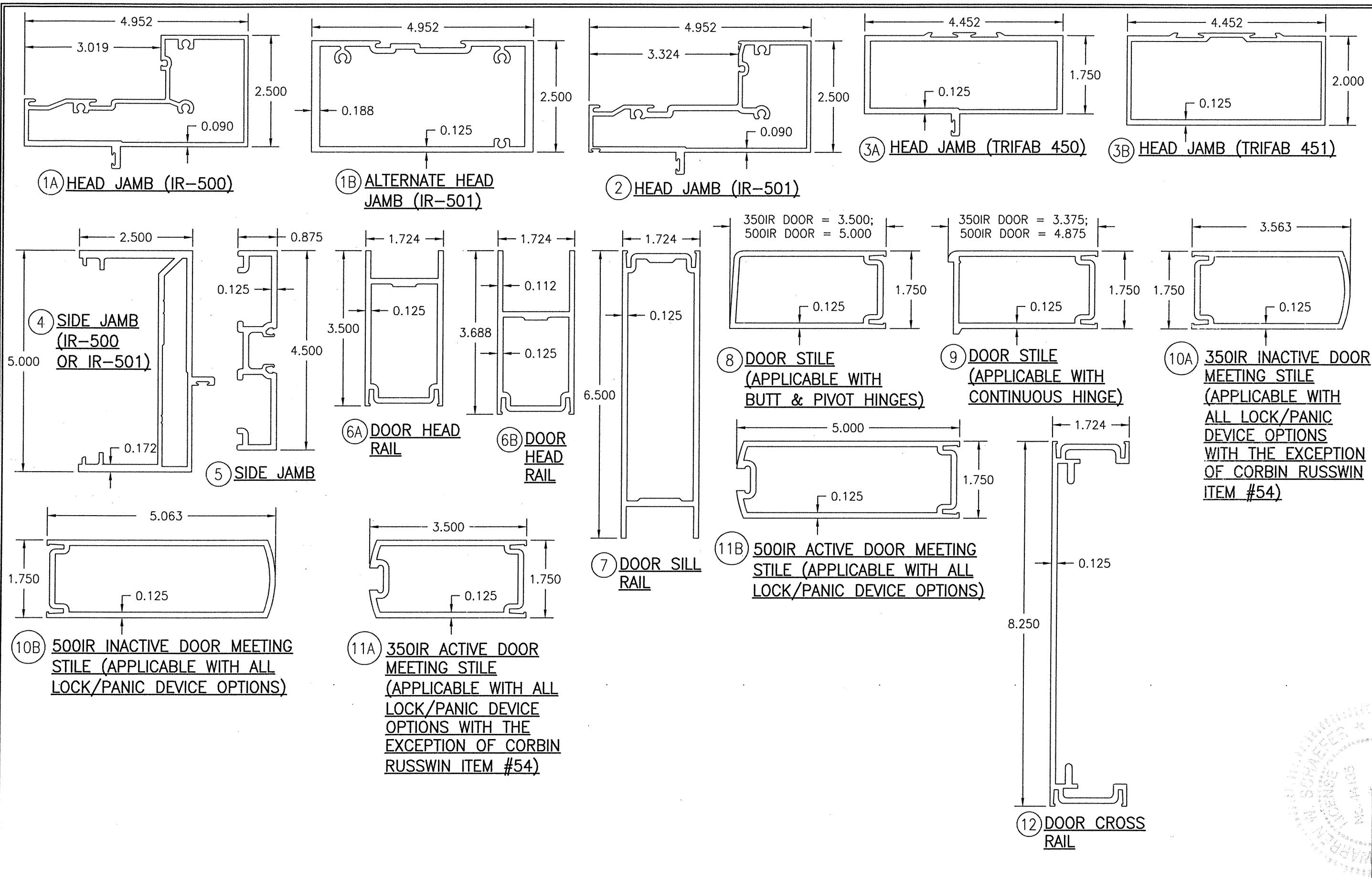


DRAWN BY: W.R.M.	CHECKED BY: W.W.S.
DATE: 1-2	DATE: 02/11/11
NO.	REVISION DESCRIPTION
DRAWING TITLE: 350/500IR OUTSWING ALUMINUM STOREFRONT DOORS - LMI DRY GLAZED	
CONSULTANTS	MANUFACTURER
W. W. SCHAEFER ENGINEERING & CONSULTING, P.A. (CA 6809) 7480 150TH COURT NORTH PALM BEACH GARDENS, FL 33418 PHONE: 561-744-3424	KAWNEER COMPANY, INC. 555 GUTHRIDGE COURT NORCROSS, GA 30092 770-449-5555
CERTIFICATION	
AUG 05 2021	
WARREN W. SCHAEFER, P.E. P.E. NO. 44135	
DRAWING NO. 1695	REV. C
SHEET NO. 9 OF 13	

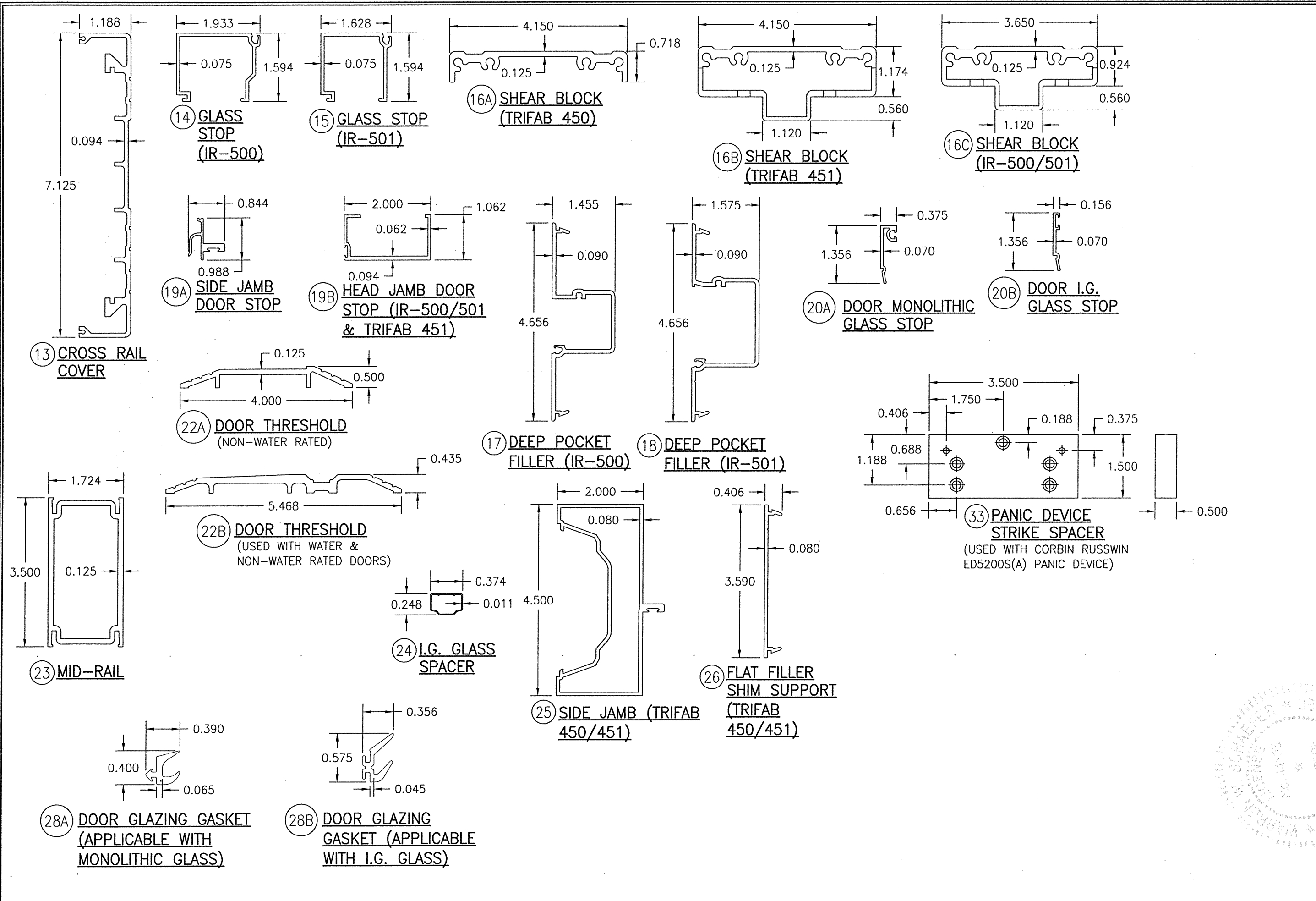




DRAWN BY: W.R.M.	CHECKED BY: W.W.S.
PLOT: 1-2	DATE: 02/11/11
NO.	REVISION DESCRIPTION
DATE	BY
DRAWING TITLE: 350/500IR OUTSWING ALUMINUM STOREFRONT DOORS - LMI DRY GLAZED MANUFACTURER: KAWNEER COMPANY, INC. 555 GUTHRIDGE COURT NORCROSS, GA 30092 770-449-5555	
CONSULTANTS: W. W. SCHAEFER ENGINEERING & CONSULTING, P.A. (CA 6809) 7480 150TH COURT NORTH, 33418 PALM BEACH GARDENS, FL 33424 PHONE: 561-744-3424	
CERTIFICATION: AUG 05 2021 WARREN W. SCHAEFER, P.E. P.E. NO. 44135	
DRAWING NO. 1695	REV. C
SHEET NO. 10 OF 13	



DRAWN BY: W.R.M.		CHECKED BY: W.W.S.	
PLOT: 1-2		DATE: 02/11/11	
NO.	REVISION DESCRIPTION	DATE	BY
DRAWING TITLE: 350/500IR OUTSWING ALUMINUM STOREFRONT DOORS - LMI DRY GLAZED			
CONSULTANTS W. W. SCHAEFER ENGINEERING & CONSULTING, P.A. (CA 6809) 7480 150TH COURT NORTH PALM BEACH GARDENS, FL 33418 PHONE: 561-744-3424		MANUFACTURER KAWNEER COMPANY, INC. 555 GUTHRIDGE COURT NORCROSS, GA 30092 770-449-5555	
CERTIFICATION WARREN W. SCHAEFER, P.E. P.E. NO. 44133 AUG 05 2021			
DRAWING NO.	REV.	SHEET NO.	
1695	C	11 OF 13	



DRAWN BY: W.R.M.		CHECKED BY: W.W.S.	
PLOT: 1=2		DATE: 02/11/11	
DATE	BY	REVISION DESCRIPTION	NO.
DRAWING TITLE: 350/500IR OUTSWING ALUMINUM STOREFRONT DOORS - LMI DRY GLAZED			
CONSULTANTS W. W. SCHAEFER ENGINEERING & CONSULTING, P.A. (CA 6809) 7480 150TH COURT NORTH PALM BEACH GARDENS, FL 33418 PHONE: 561-744-3424		MANUFACTURER KAWNEER COMPANY, INC. 555 GUTHRIE COURT NORCROSS, GA 30092 770-449-5555	
CERTIFICATION AUG 15 2021 WARREN W. SCHAEFER, P.E. P.E. NO. 44135		DRAWING NO. 1695 REV. C SHEET NO. 12 OF 13	

ITEM #	PART #	ITEM DESCRIPTION	MANUFACTURER/NOTES
PARTS			
1A	575-022	HEAD JAMB (IR-500)	6063-T6 ALUMINUM
1B	575-162	ALTERNATE HEAD JAMB (IR-500/501)	6063-T6 ALUMINUM
2	575-122	HEAD JAMB (IR-501)	6063-T6 ALUMINUM
3A	450-502	HEAD JAMB (TRIFAB 450)	6063-T6 ALUMINUM
3B	451-079	HEAD JAMB (TRIFAB 451)	6063-T6 ALUMINUM
4	575-051	SIDE JAMB (IR 500-OR IR-501)	6063-T6 ALUMINUM
5	163-036	SIDE JAMB (1600 DR JB ADAPTOR)	6063-T6 ALUMINUM
6A	200-023	DOOR; TOP RAIL	6063-T6 ALUMINUM
6B	200-024	DOOR; TOP RAIL	6063-T6 ALUMINUM
7	200-032	DOOR; BOTTOM RAIL	6063-T6 ALUMINUM
8	200-005	DOOR STILE (APPLICABLE WITH BUTT & PIVOT HINGES)	6063-T6 ALUMINUM
9	200-012	DOOR STILE (APPLICABLE WITH CONTINUOUS HINGES)	6063-T6 ALUMINUM
10A	200-007	350IR INACTIVE DOOR MEETING STILE (APPLICABLE WITH ALL LOCK/PANIC DEVICE OPTIONS WITH THE EXCEPTION OF CORBIN RUSSWIN ITEM #54)	6063-T6 ALUMINUM
10B	200-010	500IR INACTIVE DOOR MEETING STILE (APPLICABLE WITH ALL LOCK/PANIC DEVICE OPTIONS)	6063-T6 ALUMINUM
11A	200-006	350IR ACTIVE DOOR MEETING STILE (APPLICABLE WITH ALL LOCK/PANIC DEVICE OPTIONS WITH THE EXCEPTION OF CORBIN RUSSWIN ITEM #54)	6063-T6 ALUMINUM
11B	200-009	500IR ACTIVE DOOR MEETING STILE (APPLICABLE WITH ALL LOCK/PANIC DEVICE OPTIONS)	6063-T6 ALUMINUM
12	233-013	DOOR CROSS RAIL	6063-T6 ALUMINUM
13	033-105	CROSS RAIL COVER	6063-T6 ALUMINUM
14	575-004	GLASS STOP (IR-500)	6063-T6 ALUMINUM
15	575-104	GLASS STOP (IR-501)	6063-T6 ALUMINUM
16A	450-103	SHEAR BLOCK (TRIFAB 450)	6063-T6 ALUMINUM
16B	451-141	SHEAR BLOCK (TRIFAB 451)	6063-T6 ALUMINUM
16C	400-140	SHEAR BLOCK (IR-500/501)	6063-T6 ALUMINUM
17	575-035	DEEP POCKET FILLER (IR-500)	6063-T6 ALUMINUM
18	575-135	DEEP POCKET FILLER (IR-501)	6063-T6 ALUMINUM
19A	450-520	SIDE JAMB DOOR STOP	6063-T6 ALUMINUM
19B	041-045	HEAD JAMB DOOR STOP (451 & 500/501)	6063-T6 ALUMINUM
20A	575-043	DOOR MONOLITHIC GLASS STOP	6063-T6 ALUMINUM
20B	575-040	DOOR I.G. GLASS STOP	6063-T6 ALUMINUM
22A	069-139	DOOR THRESHOLD (NON-WATER RESISTANCE RATED)	6063-T6 ALUMINUM
22B	069-301	DOOR THRESHOLD (WATER RESISTANCE RATED WITH DAM)	6063-T6 ALUMINUM
23	200-058	MID-RAIL	6063-T6 ALUMINUM
24	200-058	I.G. GLASS SPACER	3005 OR 3105 ALUMINUM
25	451-064	SIDE JAMB (TRIFAB 450/451)	6063-T6 ALUMINUM
26	450-126	FLAT FILLER SHIM SUPPORT (TRIFAB 450/451)	6063-T6 ALUMINUM
26A	050-044	C09 MEETING STILE COVER FOR WATER RATED DOOR	MATERIAL VARIES
SEALS AND SEALANTS			
27	027-078	DOOR BULB WEATHERING	ALCRYN
27A	027-474	.210 PILE WEATHERSTRIP	PVC UNPLASTICIZED
28A	027-563	DOOR GLAZING GASKET (APPLICABLE WITH MONOLITHIC GLASS)	TREMCO TR-13536E EPDM DUROMETER 70 +/-5
28B	027-557	DOOR GLAZING GASKET (APPLICABLE WITH I.G. GLASS)	KRP 027-557 POLYPROPYLENE & SANTOPRENE DUROMETER 65 +/-5
30A	027-342	DOOR SETTING BLOCK (APPLICABLE WITH MONOLITHIC GLASS)	NEOPRENE
30B	027-059	DOOR SETTING BLOCK (APPLICABLE WITH I.G. GLASS)	NEOPRENE
31	200-795	DOOR BOTTOM RAIL WEATHER SWEEP	VARIED
32	200-497	ADJUSTABLE ASTRAGAL WEATHERING	VARIED
33	966-193	PANIC DEVICE STRIKE SPACER	ALUMINUM; USED W/LOCK ITEM #54

ITEM #	PART #	ITEM DESCRIPTION	MANUFACTURER/NOTES
HARDWARE			
36	050-821	CONTINUOUS GEAR HINGE	HAGER/ROTON, STANLEY OR ABH
37	037-264	BUTT HINGE	HAGER, STANLY OR MCKINNEY
38	050-322	TOP OFFSET PIVOT HINGE	KAWNEER
	050-331	INTERMEDIATE OFFSET PIVOT HINGE	
	050-326	RH BOTTOM OFFSET PIVOT HINGE	
	050-327	LH BOTTOM OFFSET PIVOT HINGE	
39	-	ACTIVE DOOR LOCK ASSEMBLY	ADAMS-RITE 1850 3-POINT LOCK SYSTEM WITH KAWNEER'S CYLINDER,
40	50-079	INACTIVE DOOR TOP FLUSH BOLT	ADAMS-RITE 1850 FLUSH BOLT SYSTEM WITH KAWNEER'S PUSH PACKAGE
	50-075	INACTIVE DOOR BOTTOM FLUSH BOLT	
41	-	ACTIVE DOOR LOCK ASSEMBLY	ADAMS-RITE MS 1850 3-POINT LOCK SYSTEM WITH KAWNEER'S CYLINDER, THUMBTURN & PUSH PACKAGE
42	-	INACTIVE DOOR LOCK ASSEMBLY	ADAMS-RITE 2180 2-POINT LOCK SYSTEM WITH KAWNEER'S PUSH PACKAGE
45	-	CONCEALED ROD EXIT/PANIC DEVICE	JACKSON 2086
46	-	CONCEALED ROD EXIT/PANIC DEVICE	KAWNEER 1686
47	-	CONCEALED ROD EXIT/PANIC DEVICE	SARGENT 8400
48	-	CONCEALED ROD EXIT/PANIC DEVICE	PANELINE CR-90
49	-	CONCEALED ROD EXIT/PANIC DEVICE	SARGENT AD8400
50	-	CONCEALED ROD EXIT/PANIC DEVICE	VON DUPRIN HH9947
51	-	CONCEALED ROD EXIT/PANIC DEVICE	CALIBRE 9100
52	-	CONCEALED ROD EXIT/PANIC DEVICE	ADAMS RITE G86
53	-	CONCEALED ROD EXIT/PANIC DEVICE	FALCON HH1690
54	-	RIM PANIC DEVICE WITH KEYED REMOVABLE MULLION	CORBIN RUSSWIN ED5200S(A)
MISCELLANEOUS FASTENERS			
55	-	NO. 12 X 2" SCREW	3" FROM ENDS & MAX. 11" O.C.
56	-	NO. 12-24 X 9/16" S.S SCREW	8 PER HINGE
57	-	NO. 12-24 X 13/32" SCREW	2 9/16" FROM ENDS & MAX. 5 1/8" O.C. (52 MAX. PER HINGE)
58	-	5/16"-18 X 5/8" SCREW	2 PER TOP PIVOT HINGE
59	-	NO. 12-24 X 9/16" S.S SCREW	2 PER INTERMEDIATE PIVOT HINGE
60	-	1/4-20 X 3/8" SCREW	3 PER BOTTOM PIVOT HINGE
61	-	NO. 6 X 11/16" SCREW	10 PER LEAF
62	-	NO. 10 X 9/16" S.S SCREW	2 PER CLIP
63	-	NO. 10 X 1 19/32" S.S. SCREW	4 PER CLIP
65	-	NO. 6 X 3/4" S.S. SCREW	1/4" FROM ENDS & MAX. 9 17/32" O.C.
66	-	NO. 10 X 1 5/8" FHTF "B" SCREW	1" FROM ENDS & MAX. 16" O.C.

DRAWN BY: W.R.M.		CHECKED BY: W.W.S.	
PLOT: 1=2		DATE: 02/11/11	
DATE	BY	REVISION DESCRIPTION	NO.
DRAWING TITLE: 350/500IR OUTSWING ALUMINUM STOREFRONT DOORS - LMI DRY GLAZED			
CONSULTANTS W. W. SCHAEFER ENGINEERING & CONSULTING, P.A. (CA 6809) 7480 150TH COURT NORTH PALM BEACH GARDENS, FL 33418 PHONE: 561-744-3424		MANUFACTURER KAWNEER COMPANY, INC. 555 GUTHRIDGE COURT NORCROSS, GA 30092 770-449-5555	
CERTIFICATION AUG 05 2021 WARREN W. SCHAEFER, P.E. P.E. NO. 44135			
DRAWING NO. 1695		REV. C	
SHEET NO. 13 OF 13			